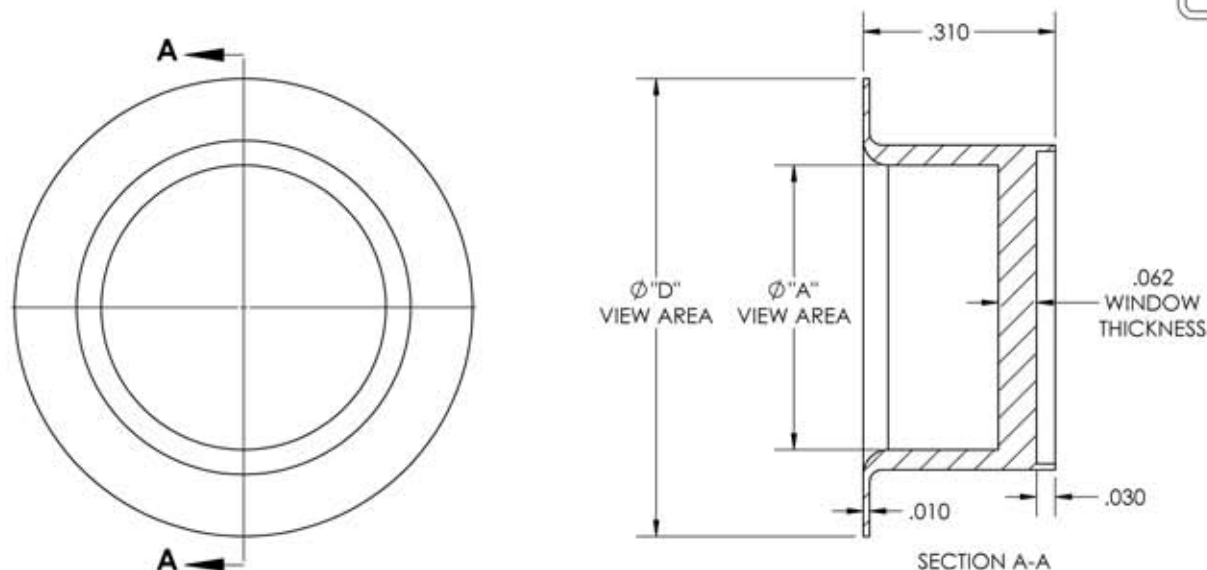


A0711

REV

10/3/2013



PART#	Ø "A" VIEW AREA	Ø "D"
A0711-1	.34	.615
A0711-2	.46	.740

## SPECIFICATIONS:

1. Leak Rate: <2 X 10<sup>-10</sup> atm cc/sec He
2. Parallelism: <3 Arc Minutes
3. Surface Finish: 50/20 Scratch-Dig
4. Thermal Range: -100 °C TO 450 °C
5. UV Transmission: 50% @ 250nm (External)
6. Orientation: 0-90°

UV Grade Sapphire Viewport, 0.34", .46" Dia, View  
0.62", .74" Dia Kovar Weld Adapter

APPROVED

TITLE:

VIEWPORT, SAPPHIRE, UV,  
WELD ADAPTER

PROPRIETARY AND CONFIDENTIAL

UNLESS OTHERWISE SPECIFIED:

MPF PRODUCTS INC.

ANY REPRODUCTION IN PART OR AS A WHOLE WITHOUT THE  
WRITTEN PERMISSION OF MPF PRODUCTS INC. IS PROHIBITED.

USED ON:

DIMENSIONS ARE IN INCHES  
TOLERANCES:

ANGULAR: MACH: 1/2°  
TWO PLACE DECIMAL  
THREE PLACE DECIMAL



±.030  
±.015

FINISH  
WELDABLE

DRAWN BY

JB

DATE

10/02/2013

CHECKED

10/02/2013

ENG APPR.

JB

10/02/2013

DO NOT SCALE DRAWING

SIZE

A

DWG. NO.

A0711

REV

10/3/2013

LAST SAVED DATE

Thursday, October 03, 2013 8:35:04 AM