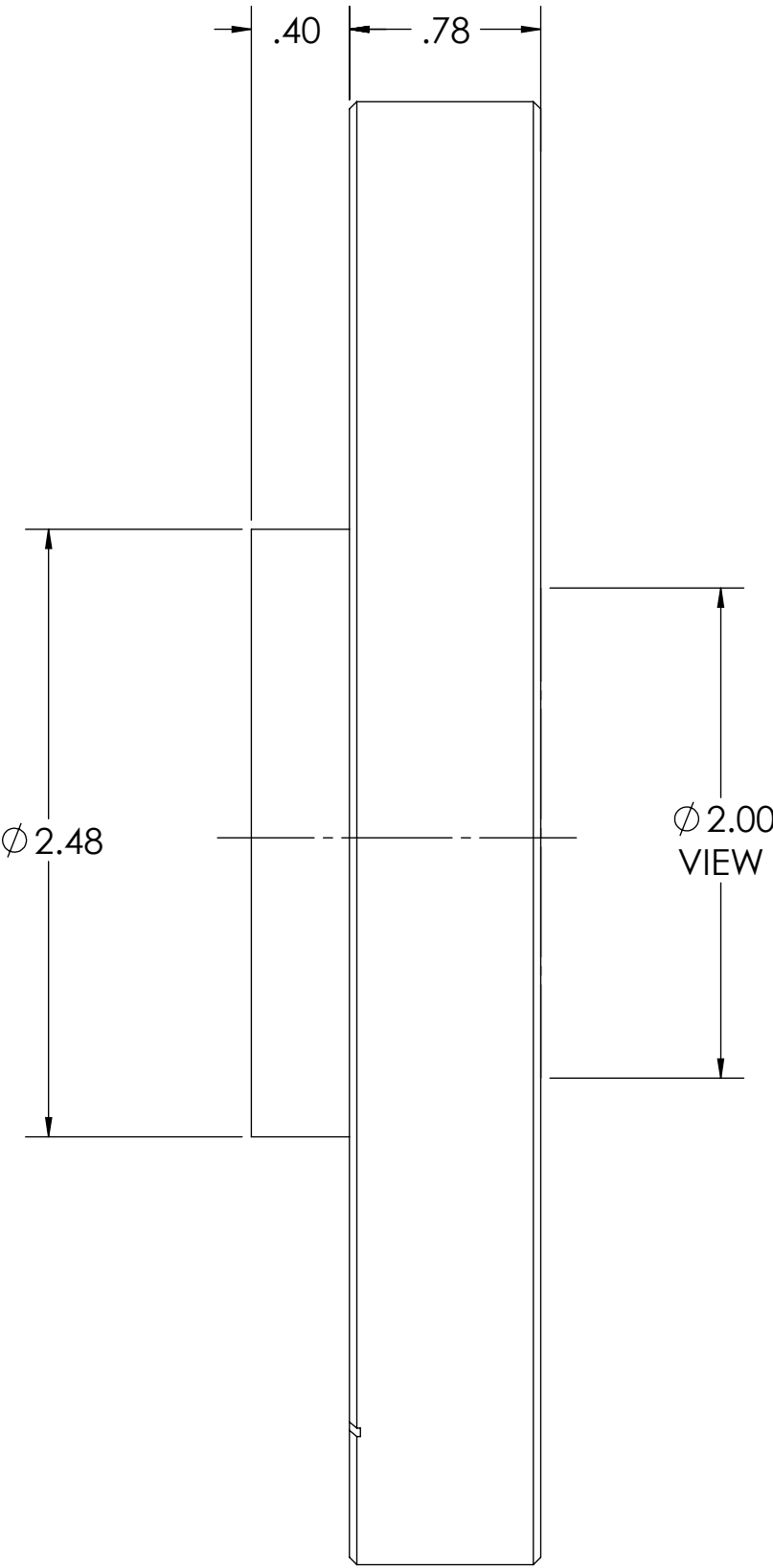
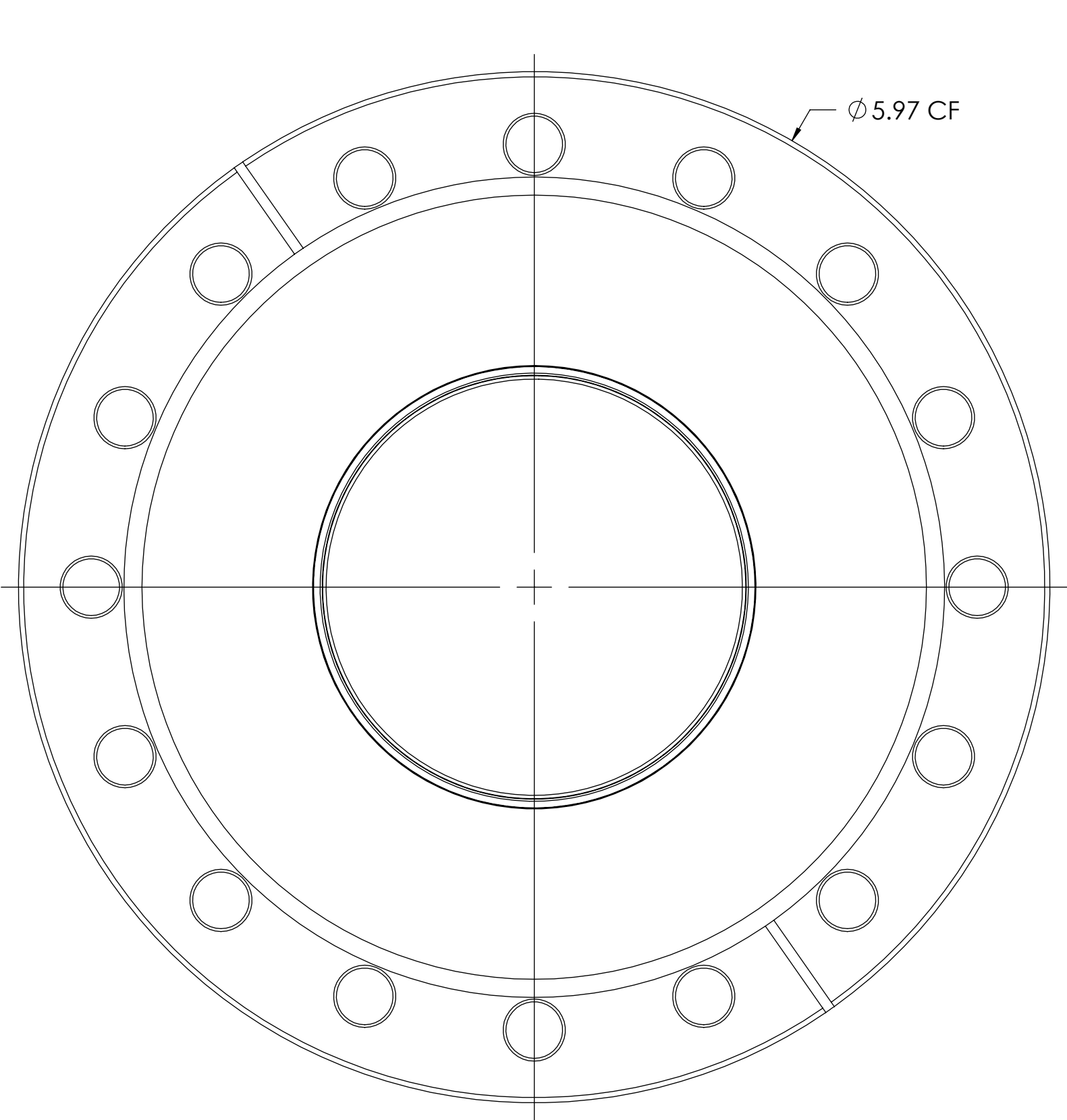


MPF PRODUCTS INC.



- SPECIFICATIONS:
1. LEAK RATE: <2 X 10-10 ATM CC/SEC HE
  2. PARALLELISM: <3 ARC MINUTES
  3. SURFACE FINISH: 50/20 SCRATCH-DIG
  4. UV TRANSMISSION: 50% @ 250NM (EXTERNAL)
  5. MATERIAL: SINGLE CRYSTAL SAPPHIRE, 0°

UV GRADE SAPPHIRE VIEWPORT, 2.00 VIEW, OVER-PRESSURE, 6.00" CONFLAT FLANGE

|   |  |   |      |            |   |                                    |         |
|---|--|---|------|------------|---|------------------------------------|---------|
| UNLESS OTHERWISE SPECIFIED:   |  | QUOTATION #   |      | APPROVED   |   |                                    |         |
| DIMENSIONS ARE IN INCHES<br>TOLERANCES:<br><br>ANGULAR: MACH ± 1/2°<br>TWO PLACE DECIMAL ± .030<br>THREE PLACE DECIMAL ± .015 |  |   | NAME | DATE       | MPF PRODUCTS INC.<br><br>TITLE:<br><br>2.00" VIEW OVER<br>PRESSURE SAPPHIRE<br>VIEWPORT<br><br>DOWNLOADED FROM MPFPI.COM<br>DWG. NO. A12821-1-CF<br>REV |                                    |         |
|   |  | DRAWN   | WJ   | 07/15/2014 |   |                                    |         |
|   |  | CHECKED   | WJ   | 07/15/2014 |   |                                    |         |
|   |  | ENG APPR.   | WJ   | 07/15/2014 |   |                                    |         |
| MATERIAL  |  | THIRD ANGLE:  |      |            |   |                                    |         |
|   |  | APPLICATION   |      |            |   |                                    |         |
|   |  | NEXT ASSY   |      |            |   |                                    | USED ON |
|   |  |   |      |            |   |                                    |         |
|   |  |   |      |            |   |                                    |         |
| FINISH  |  | SURFACE FINISH:   |      |            |   | Monday, August 31, 2015 9:30:48 AM |         |
| CONFLAT   |  | √63 OR BETTER   |      |            |   |                                    |         |
| PLATING   |  | UNLESS OTHERWISE SPECIFIED:   |      |            |   |                                    |         |
|   |  | ALL DIAMETERS CONCENTRIC WITHIN .005.<br>REMOVE ALL BURRS AND SHARP EDGES |      |            |   |                                    |         |