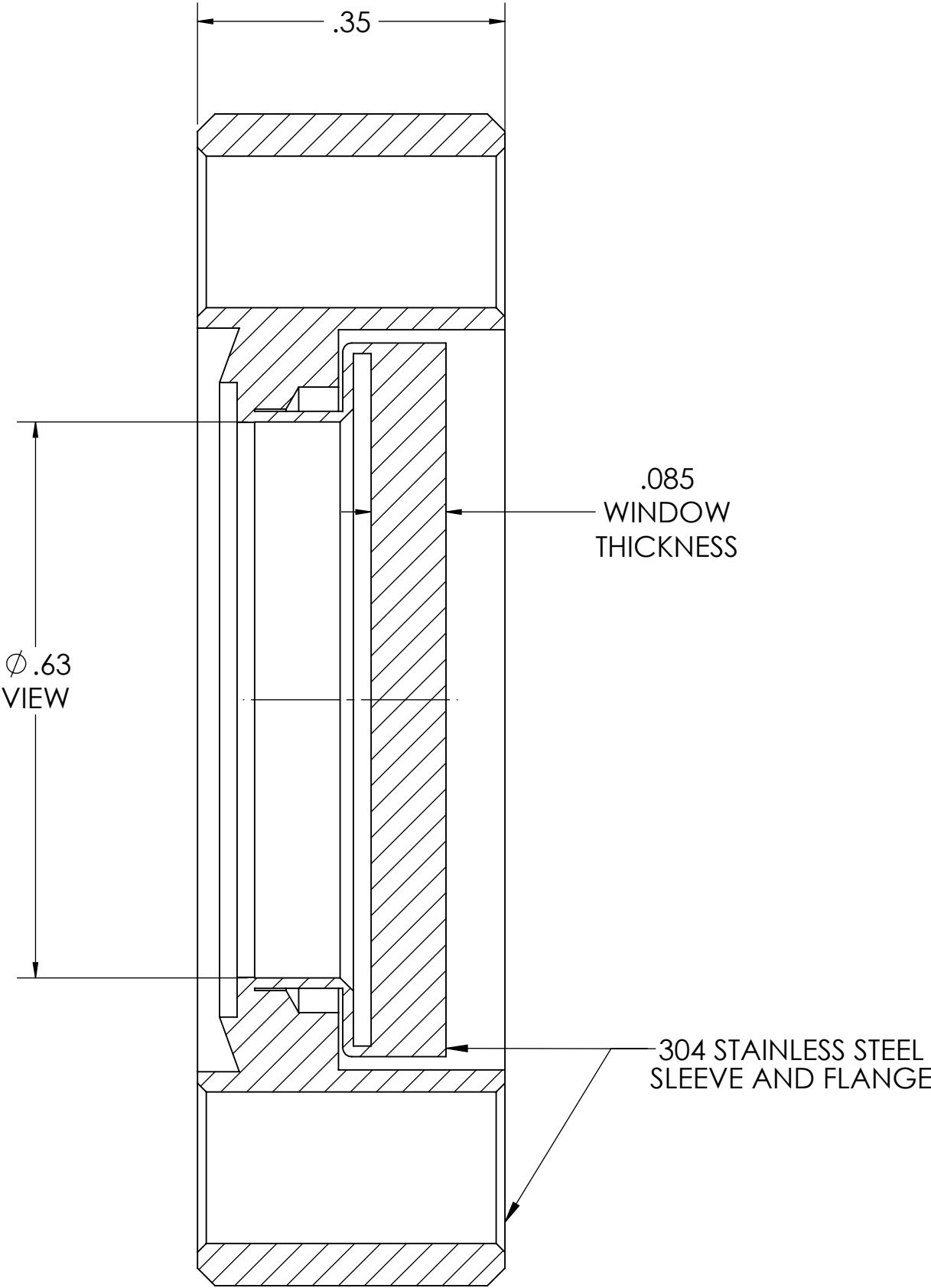
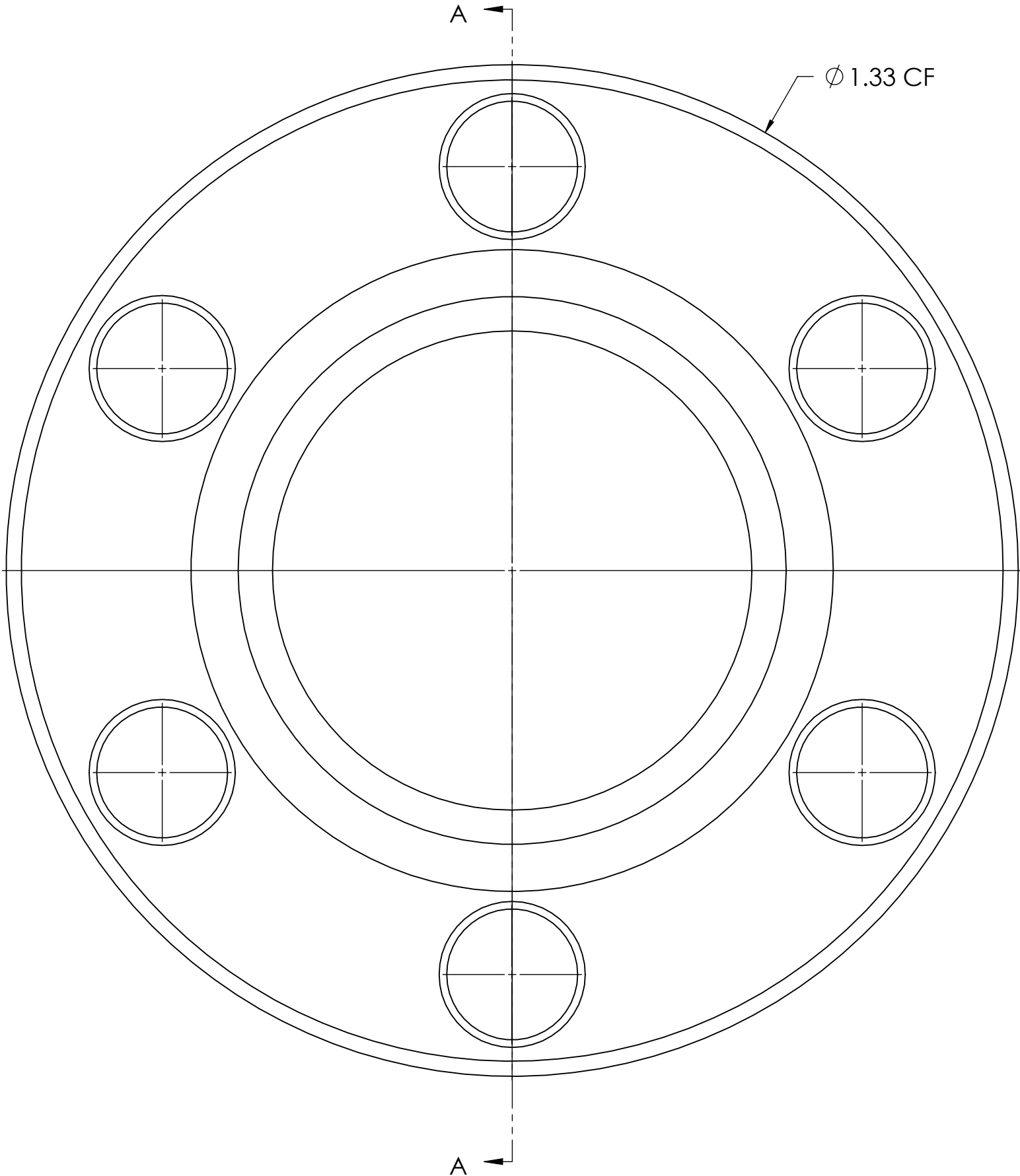


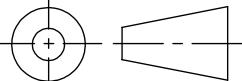
MPF PRODUCTS INC.



SECTION A-A  
SCALE 6 : 1

- NOTES:
- 1. LEAK RATE: <2 X 10-10 ATM/CC SEC HE
  - 2. PARALLELISM: <30 ARC SECONDS
  - 3. FLATNESS:  $\lambda/4$  @ 632NM TRANSMITTED WAVEFRONT
  - 4. SURFACE FINISH: 20/10 SCRATCH-DIG
  - 5. THERMAL RANGE: -100°C TO 200°C
  - 6. MATERIAL: CORNING HPFS 7980 FUSED SILICA
  - 7. TRANSMISSION: >99.8% @ 248NM (INTERNAL)
  - 8. HOMOGENEITY GRADE: A
  - 9. INCLUSION CLASS: 0

DUV Grade (Laser) Fused Silica Viewport, Zero Length Profile, 0.63" View Dia, 1.33" Conflat Flange

UNLESS OTHERWISE SPECIFIED:		QUOTATION #		APPROVED		
DIMENSIONS ARE IN INCHES TOLERANCES:  ANGULAR: MACH ± 1/2° TWO PLACE DECIMAL ± .030 THREE PLACE DECIMAL ± .015			NAME	DATE	MPF PRODUCTS INC.	
		DRAWN	WJ	10/19/2015		
		CHECKED	WJ	10/19/2015		
		ENG APPR.	WJ	10/19/2015		
MATERIAL		THIRD ANGLE:			TITLE:  VIEWPORT, FUSED SILICA, DUV, 0.63" VIEW, 133CF	
						
		APPLICATION				
		NEXT ASSY				USED ON
FINISH		SURFACE FINISH:			DOWNLOADED FROM MPFPI.COM	
		√63 OR BETTER				
CONFLAT		UNLESS OTHERWISE SPECIFIED:			DWG. NO.	REV
PLATING		ALL DIAMETERS CONCENTRIC WITHIN .005. REMOVE ALL BURRS AND SHARP EDGES				
Monday, October 19, 2015 9:48:16 AM						