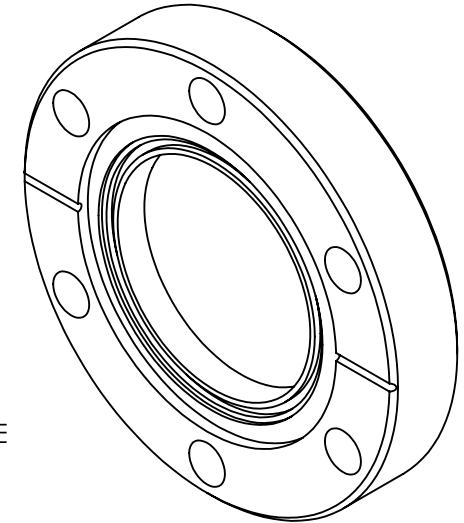
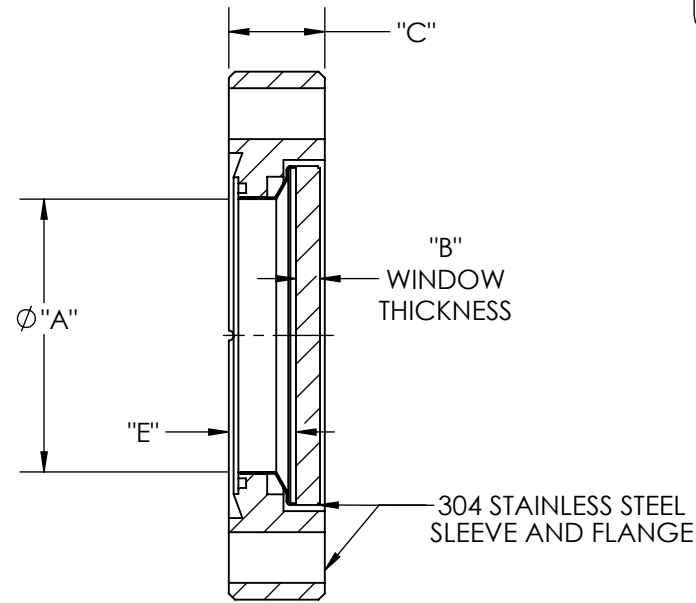
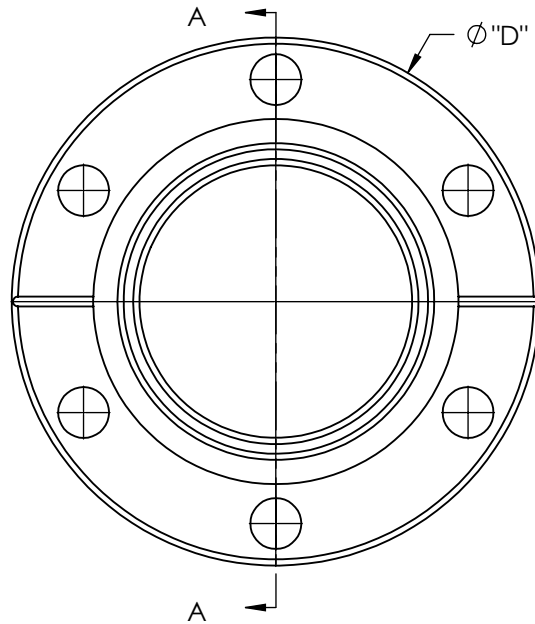


A0650

REV  
3/3/2016

## NOTES:

1. LEAK RATE:  $<2 \times 10^{-10}$  ATM-CC/SEC HE
2. PARALLELISM:  $<10$  ARC SECONDS
3. FLATNESS:  $1/4 @ 632\text{NM}$  TRANSMITTED WAVEFRONT
4. SURFACE FINISH: 20/10 SCRATCH-DIG
5. THERMAL RANGE:  $-100^{\circ}\text{C}$  TO  $200^{\circ}\text{C}$
6. MATERIAL: CORNING HPFS 7980 FUSED SILICA
7. TRANSMISSION:  $>99.8\%$  @  $248\text{NM}$  (INTERNAL)
8. HOMOGENEITY GRADE: A
9. INCLUSION CLASS: 0

PART #	$\phi$ "A" VIEW	"B"	"C"	"D"	"E"
A0650-1-CF	1.40	.13	.50	2.75	.35
A0650-2-CF	1.40	.13	.62	3.37	.35
A0650-3-CF	2.69	.25	.68	4.50	.41
A0650-4-CF	2.69	.25	.75	4.62	.41
A0650-5-CF	3.88	.25	.78	6.00	.51
A0650-6-CF	3.88	.25	.84	6.75	.51
A0650-7-CF	5.38	.37	.88	8.00	.48

APPROVED

DUV Grade Fused Silica Viewport, Zero Length Profile, 1.40" 2.69", 3.88", 5.38" View Dia, Conflat Flange

## TITLE:

VIEWPORT, FUSED SILICA, DUV,  
CF FLANGE

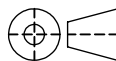
PROPRIETARY AND CONFIDENTIAL

UNLESS OTHERWISE SPECIFIED:

MPF PRODUCTS INC.

ANY REPRODUCTION IN PART OR AS A WHOLE WITHOUT THE  
WRITTEN PERMISSION OF MPF PRODUCTS INC. IS PROHIBITED.

USED ON:

DIMENSIONS ARE IN INCHES  
TOLERANCES:ANGULAR: MACH  $\pm 1/2^{\circ}$   
TWO PLACE DECIMAL  
THREE PLACE DECIMAL $\pm .030$   
 $\pm .015$ FINISH  
CONFLAT

DO NOT SCALE DRAWING

DRAWN BY

WJ

CHECKED

WJ

ENG APPR.

WJ

DATE

04/24/2014

04/24/2014

04/24/2014

SIZE

A

DWG. NO.

A0650

REV

3/3/2016

LAST SAVED DATE

Thursday, March 03, 2016 11:47:45 AM