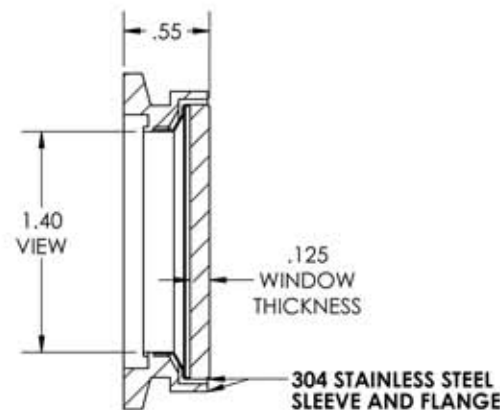
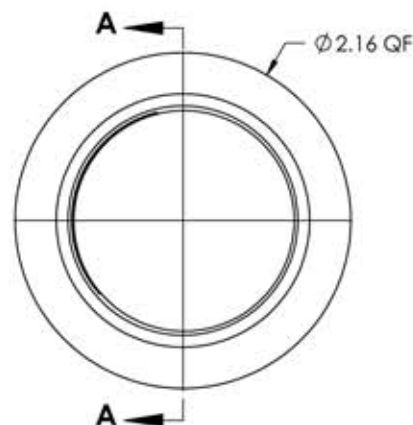


A2206-2-QF

REV

10/8/2013



SECTION A-A



NOTES:


1. Leak Rate: $<2 \times 10^{-10}$ atm/cc sec He
2. Parallelism: <10 Arc Seconds
3. Flatness: $\lambda/4$ @ 632nm Transmitted Wavefront
4. Surface Finish: 20/10 Scratch-Dig
5. Thermal Range: -100°C To 200°C
6. Material: Corning HPFS 7980 Fused Silica
7. Transmission: $>99.8\%$ @ 248nm (Internal)
8. Homogeneity Grade: A
9. Inclusion Class: 0

APPROVED

DUV Grade Fused Silica Viewport, 1.40" View Dia, 2.16" Quick Flange

TITLE:

VIEWPORT, FUSED SILICA,
DUV, 1.4 VIEW, QF40

PROPRIETARY AND CONFIDENTIAL		UNLESS OTHERWISE SPECIFIED:		MPF PRODUCTS INC.				DUV, 1.4 VIEW, QF40			
ANY REPRODUCTION IN PART OR AS A WHOLE WITHOUT THE WRITTEN PERMISSION OF MPF PRODUCTS INC. IS PROHIBITED.		DIMENSIONS ARE IN INCHES TOLERANCES:			FINISH	DRAWN BY	JB	DATE	SIZE A	DWG. NO. A2206-2-QF	REV 10/8/2013
USED ON:		ANGULAR: MACH ± 1/2 ° TWO PLACE DECIMAL THREE PLACE DECIMAL ± .030 ± .015			QUICK FLANGE	CHECKED					
					DO NOT SCALE DRAWING	ENG APPR.	JB				