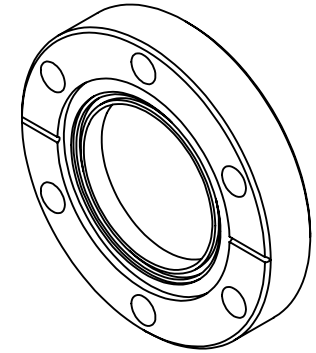
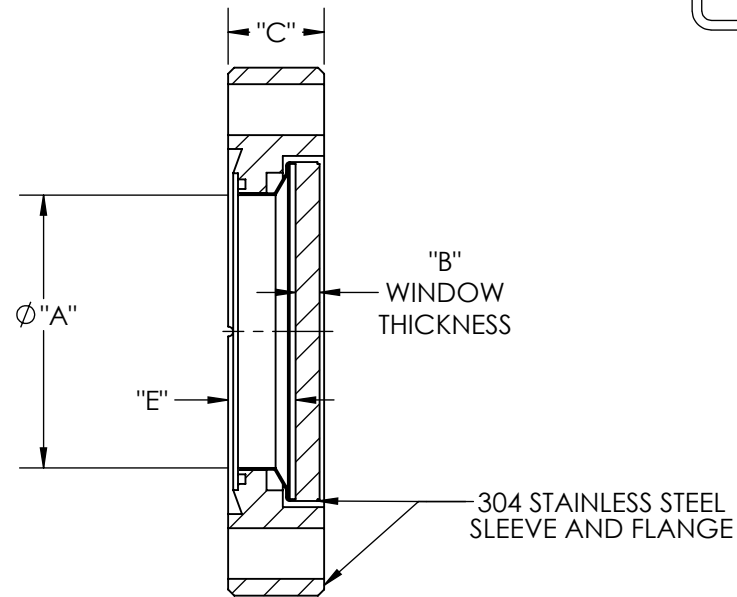
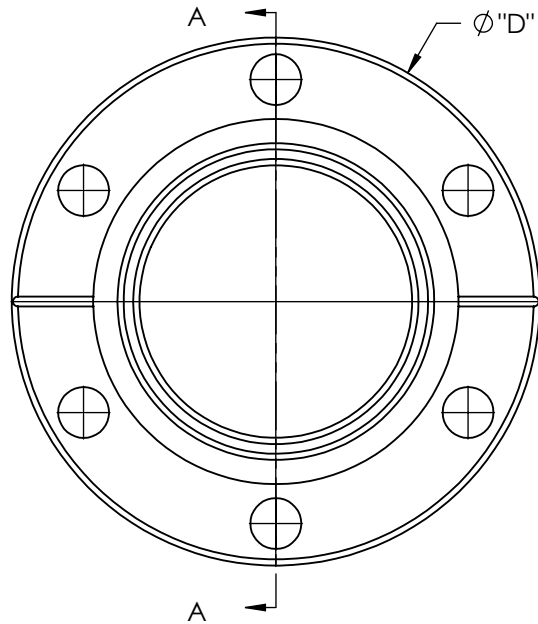


A0651

REV
3/3/2016

PART#	$\phi 'A''$ VIEW	"B"	"C"	"D"	"E"
A0651-1-CF	1.40	.13	.50	2.75	.35
A0651-2-CF	1.40	.13	.62	3.37	.35
A0651-3-CF	2.69	.25	.68	4.50	.41
A0651-4-CF	2.69	.25	.75	4.62	.41
A0651-5-CF	3.88	.25	.78	6.00	.51
A0651-6-CF	3.88	.25	.84	6.75	.51
A0651-7-CF	5.38	.37	.88	8.00	.48
A0651-8-CF	7.78	.37	.97	10.00	.53

NOTES:

1. LEAK RATE: <2 X 10⁻¹⁰ ATM-CC/SEC HE
2. PARALLELISM: <30 ARC MINUTES
3. FLATNESS: 10 WAVES @ 632NM TRANSMITTED WAVEFRONT
4. SURFACE FINISH: 40/20 SCRATCH-DIG
5. THERMAL RANGE: -100°C TO 200°C
6. MATERIAL: CORNING HPFS 7980 FUSED SILICA
7. TRANSMISSION: >90% @ 250NM (EXTERNAL)
8. HOMOGENEITY GRADE: F
9. INCLUSION CLASS: 2

APPROVED

UV Grade Fused Silica Viewport, Zero Length Profile, 1.40" 2.69", 3.88", 5.38", 7.78" View Dia, Conflat Flange

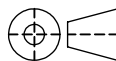
TITLE:

VIEWPORT, FUSED SILICA, UV, CF FLANGE

PROPRIETARY AND CONFIDENTIAL**UNLESS OTHERWISE SPECIFIED:****MPF PRODUCTS INC.**

ANY REPRODUCTION IN PART OR AS A WHOLE WITHOUT THE WRITTEN PERMISSION OF MPF PRODUCTS INC. IS PROHIBITED.

USED ON:

DIMENSIONS ARE IN INCHES
TOLERANCES:ANGULAR: MACH $\pm 1/2^\circ$
TWO PLACE DECIMAL
THREE PLACE DECIMAL $\pm .030$
 $\pm .015$ FINISH
CONFLAT

DO NOT SCALE DRAWING

DRAWN BY

WJ

DATE
04/24/2014

CHECKED

WJ

04/24/2014

ENG APPR.

WJ

04/24/2014

SIZE

A

DWG. NO.

A0651

REV

3/3/2016

LAST SAVED DATE

Thursday, March 03, 2016 11:49:49 AM