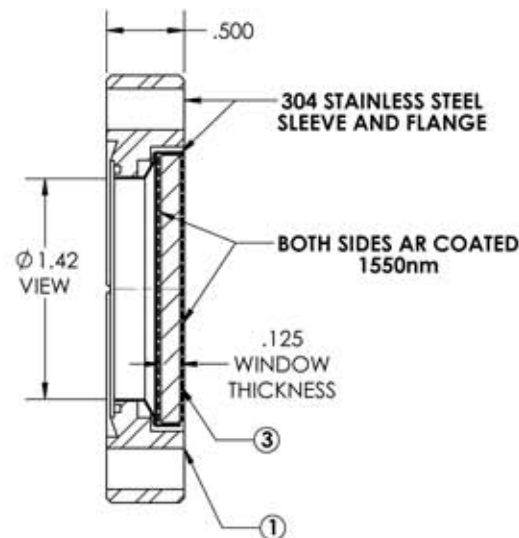
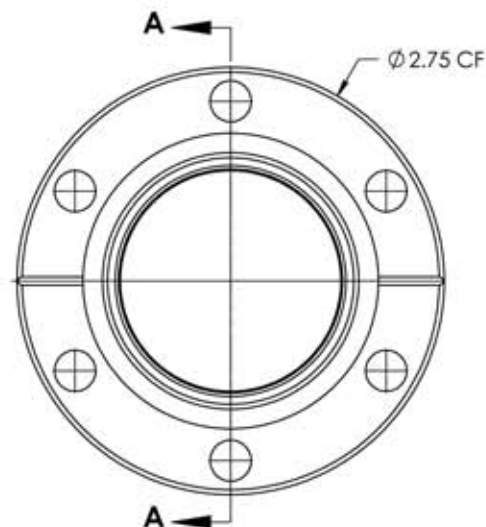


A12262-1-CF REV

10/8/2013



## NOTES:

1. Leak Rate:  $< 2 \times 10^{-10}$  atm/cc sec He
2. Parallelism:  $< 10$  Arc Seconds
3. Flatness:  $\lambda/4$  @ 632nm Transmitted Wavefront
4. Surface Finish: 20/10 Scratch-Dig
5. Thermal Range:  $-100^{\circ}\text{C}$  To  $200^{\circ}\text{C}$
6. Material: Corning HPFS 7980 Fused Silica
7. Transmission:  $> 99.8\%$  @ 248nm (Internal)
8. Homogeneity Grade: A
9. Inclusion Class: 0
10. AR Coat Both Sides 1550nm,  $R < 0.25\%$  Per Surface
11. Laser Damage Threshold: 10 J/cm<sup>2</sup> For 10 ns Pulse

DUV GRADE ( LASER ) FUSED SILICA VIEWPORT, ZERO LENGTH PROFILE, AR COATED 1550nm  
1.42" VIEW DIA., 2.75" CONFLAT FLANGE

APPROVED

TITLE:

VIEWPORT, FUSED SILICA, DUV  
AR COATING 1550nm  
1.4 VIEW, 275CF

PROPRIETARY AND CONFIDENTIAL		UNLESS OTHERWISE SPECIFIED:		MPF PRODUCTS INC.			AR COATING 1550nm 1.4 VIEW, 275CF		
ANY REPRODUCTION IN PART OR AS A WHOLE WITHOUT THE WRITTEN PERMISSION OF MPF PRODUCTS INC. IS PROHIBITED.	DIMENSIONS ARE IN INCHES TOLERANCES:  ANGULAR: MACH: 1/2° TWO PLACE DECIMAL THREE PLACE DECIMAL		FINISH	DRAWN BY	DATE	SIZE	DWG. NO.	REV	
			1550NM AR COATED	WJ	10/02/2013	A	A12262-1-CF	10/8/2013	
DO NOT SCALE DRAWING				ENG APPR.	WJ	10/02/2013	LAST SAVED DATE Tuesday, October 08, 2013 8:57:37 AM		