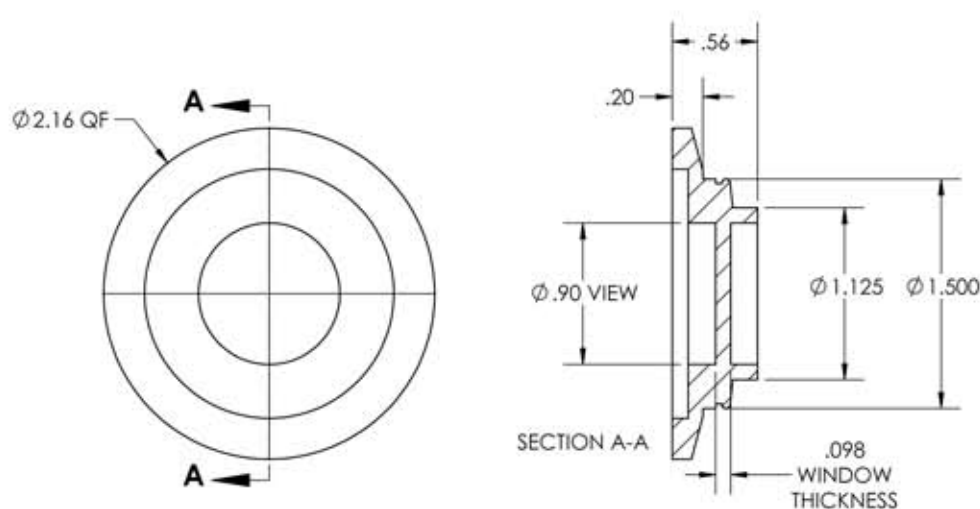


A8434-3-QF

REV

10/3/2013



NOTES:

1. Leak Rate: $<2 \times 10^{-10}$ atm/cc sec He
2. Parallelism: <3 Arc Minutes
3. Flatness: $\lambda/2$ @ 632nm Transmitted Wavefront
4. Surface Finish: 20/10 Scratch-Dig
5. Thermal Range: -100°C To 200°C
6. Material: Single Crystal, 0" Magnesium Fluoride

APPROVED

Magnesium Fluoride (MgF₂) Viewport, UHV Rated Vacuum-Optics,
0.90" View Dia, 2.16" Quick Flange

TITLE:

VIEWPORT, MgF₂ VAC-OPTICS,
1.0 VIEW, QF40

PROPRIETARY AND CONFIDENTIAL		UNLESS OTHERWISE SPECIFIED:		MPF PRODUCTS INC.			1.0 VIEW, QF40			
ANY REPRODUCTION IN PART OR AS A WHOLE WITHOUT THE WRITTEN PERMISSION OF MPF PRODUCTS INC. IS PROHIBITED.		DIMENSIONS ARE IN INCHES TOLERANCES: ANGULAR: MACH: 1/2 ° TWO PLACE DECIMAL THREE PLACE DECIMAL		FINISH	DRAWN BY	JB	DATE	SIZE	DWG. NO.	REV
USED ON:				QUICK FLANGE	CHECKED			A	A8434-3-QF	10/3/2013
				DO NOT SCALE DRAWING	ENG APPR.	JB				