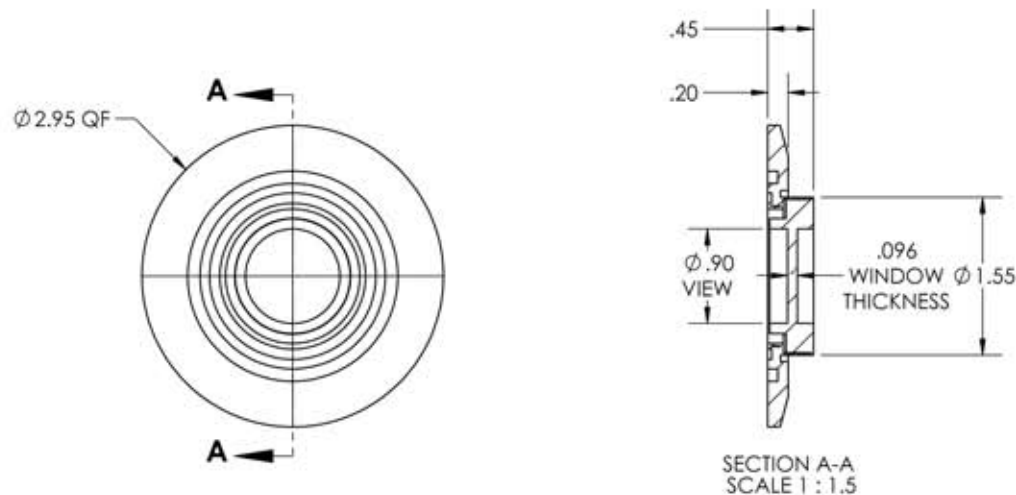


A4931-2-QF

REV
10/3/2013

NOTES:

1. Leak Rate: <2 X 10⁻¹⁰ atm/cc sec He
2. Parallelism: <3 Arc Minutes
3. Flatness: 1λ @ 632nm Transmitted Wavefront
4. Surface Finish: 40/20 Scratch-Dig
5. Thermal Range: -100 °C To 200 °C
6. Material: Zinc Selenide

Zinc Selenide (ZnSe) Viewport, UHV Rated Vacuum-Optics,
0.90" View Dia, 2.95" Quick Flange

APPROVED

TITLE:

VIEWPORT, ZnSe VAC-OPTICS,
1.0 VIEW, QF50

PROPRIETARY AND CONFIDENTIAL		UNLESS OTHERWISE SPECIFIED:		MPF PRODUCTS INC.			1.0 VIEW, QF50					
ANY REPRODUCTION IN PART OR AS A WHOLE WITHOUT THE WRITTEN PERMISSION OF MPF PRODUCTS INC. IS PROHIBITED.		DIMENSIONS ARE IN INCHES TOLERANCES:			FINISH		DRAWN BY	JB	DATE	SIZE	DWG. NO.	REV
USED ON:		ANGULAR: MACH ± 1/2 ° TWO PLACE DECIMAL THREE PLACE DECIMAL			QUICK FLANGE							
					DO NOT SCALE DRAWING		ENG APPR.	JB		LAST SAVED DATE	Thursday, October 03, 2013 7:55:00 AM	
												10/3/2013



Engineering Assistance
Custom parts & modifications
Available on all parts

In-House Manufacturing
Manufactured on-site to
our high quality standards

Fast Turnaround
Quick shipping on stock parts
and quick design on custom parts

For Questions or to Order:

1-866-429-4224
MPFPI.com
sales@mpfpi.com