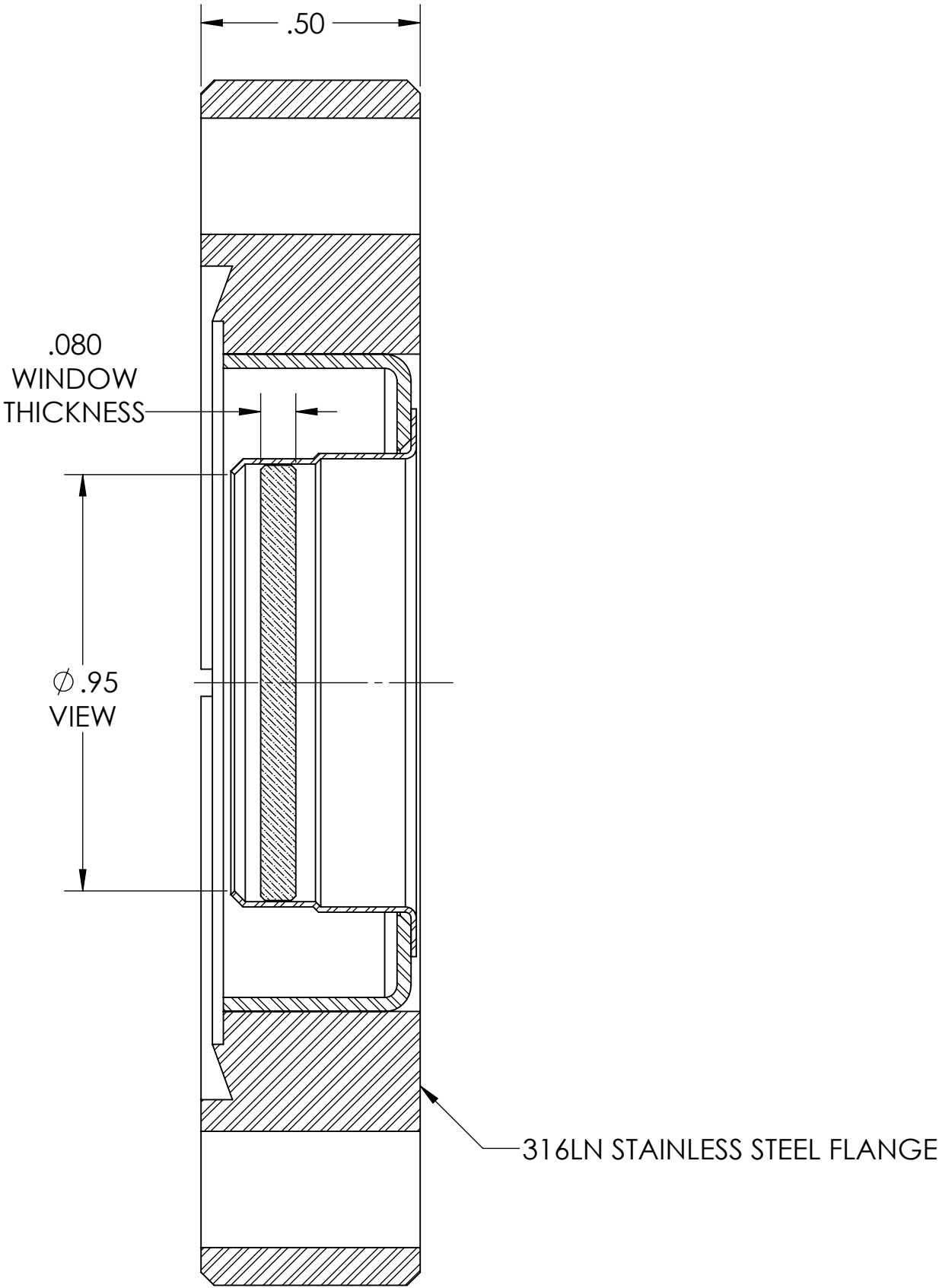
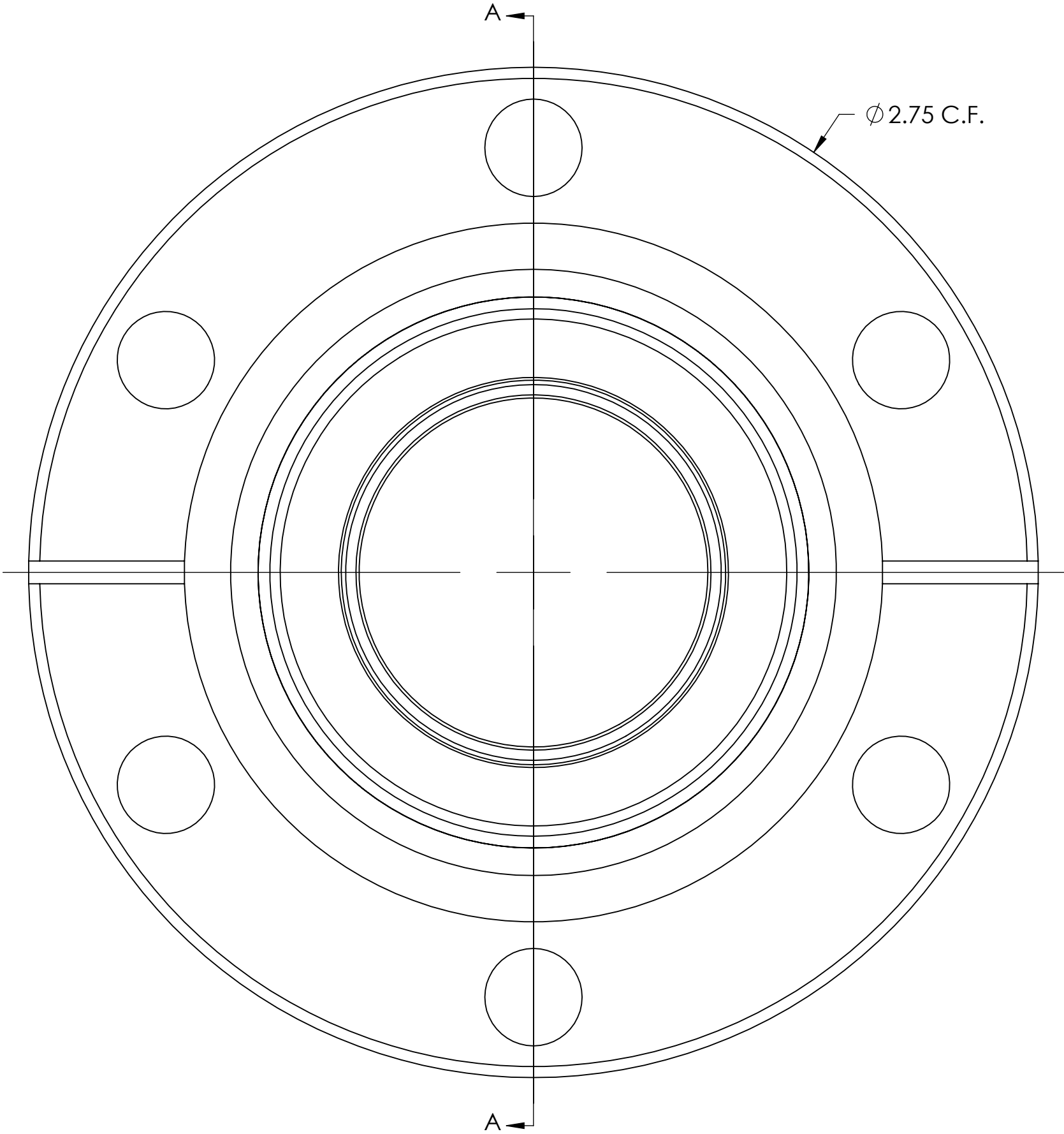


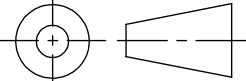

MPF PRODUCTS INC.



SECTION A-A

- NOTES:
- 1. MATERIAL: SAPPHIRE
 - 2. FLATNESS: .0002 IN PER IN
 - 3. SURFACE FINISH: 20/10 SCRATCH-DIG
 - 4. PARALLELISM: < 3 ARC MINUTES
 - 5. ORIENTATION: 0°
 - 6. TEMPERATURE RANGE: -100C TO 450C
 - 7. LEAK RATE < 1X10⁻⁹ ATM CC/SEC HE
 - 8. TRANSMISSION OF THE WINDOW TO BE:
 - MIN. 70% AT 250nm AND 80% AT 260-600nm IN 1mm THICKNESS (UNCORRECTED FOR FRESNEL LOSSES)

DUV GRADE SAPPHIRE VIEWPORT, NON-MAGNETIC, .95 VIEW DIA., 2.75" CONFLAT FLANGE

UNLESS OTHERWISE SPECIFIED:		QUOTATION #		APPROVED	
DIMENSIONS ARE IN INCHES TOLERANCES: ANGULAR: MACH ± 1/2° TWO PLACE DECIMAL ± .030 THREE PLACE DECIMAL ± .015			NAME	DATE	MPF PRODUCTS INC.
		DRAWN	WJ	7/31/2015	
		CHECKED	WJ	7/31/2015	
		ENG APPR.	WJ	7/31/2015	
MATERIAL		THIRD ANGLE:			TITLE: VIEWPORT, SAPPHIRE, DUV, NON-MAGNETIC, 1.00 VIEW, 275CF
					
		APPLICATION			
		NEXT ASSY USED ON			
FINISH NON-MAGNETIC CONFLAT PLATING		SURFACE FINISH:  OR BETTER			DOWNLOADED FROM MPFPI.COM DWG. NO. REV
		UNLESS OTHERWISE SPECIFIED: ALL DIAMETERS CONCENTRIC WITHIN .005. REMOVE ALL BURRS AND SHARP EDGES			
					A12272-1-CF
					Friday, July 31, 2015 11:04:04 AM