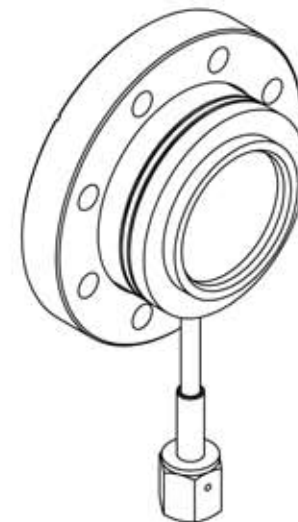
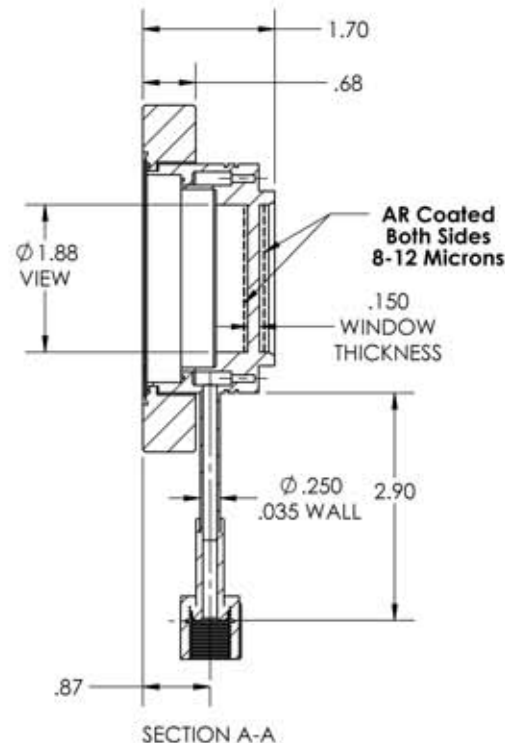
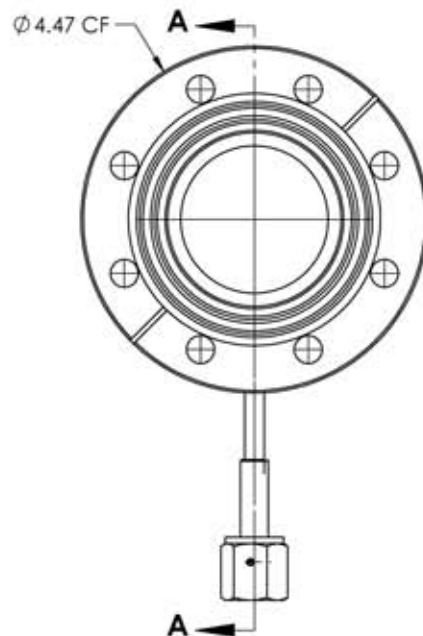


A4523-2-CF


REV
10/3/2013

NOTES:

1. Designed For <2 X 10⁻¹² atm/cc sec He
2. Parallelism: <3 Arc Minutes
3. Flatness: $\lambda/4$ @ 632nm Transmitted Wavefront
4. Surface Finish: 40/20 Scratch-Dig
5. Thermal Range: -100°C To 200°C
6. Material: Zinc Sulfide (Cleartran)
7. AR Coated 8-12 Microns

Cleartran (ZnS) Viewport w/ AR Coating for 8-12 microns,
Differentially Pumped, 1.88" View Dia, 4.50" Conflat Flange,
VCRF Fitting

APPROVED

PROPRIETARY AND CONFIDENTIAL			UNLESS OTHERWISE SPECIFIED:			MPF PRODUCTS INC.			AR 8-12 micron, 2" VIEW, 450CF MOUNT, VCRF FITTING		
ANY REPRODUCTION IN PART OR AS A WHOLE WITHOUT THE WRITTEN PERMISSION OF MPF PRODUCTS INC. IS PROHIBITED.		DIMENSIONS ARE IN INCHES TOLERANCES: ANGULAR: MACH: 1/2" TWO PLACE DECIMAL THREE PLACE DECIMAL		FINISH	DRAWN BY	JB	DATE	SIZE	DWG. NO.	REV	
				CONFLAT	CHECKED		10/02/2013				
USED ON:				DO NOT SCALE DRAWING	ENG APPR.	JB	10/02/2013	LAST SAVED DATE	Thursday, October 03, 2013 8:31:04 AM		
								A	A4523-2-CF	10/3/2013	