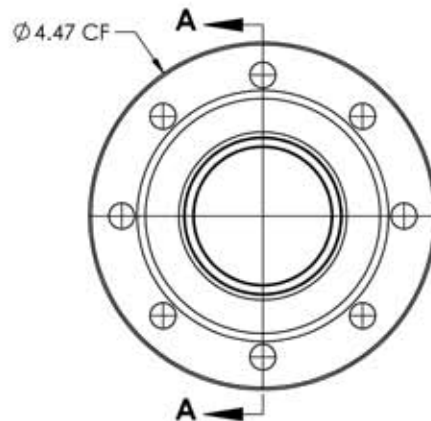
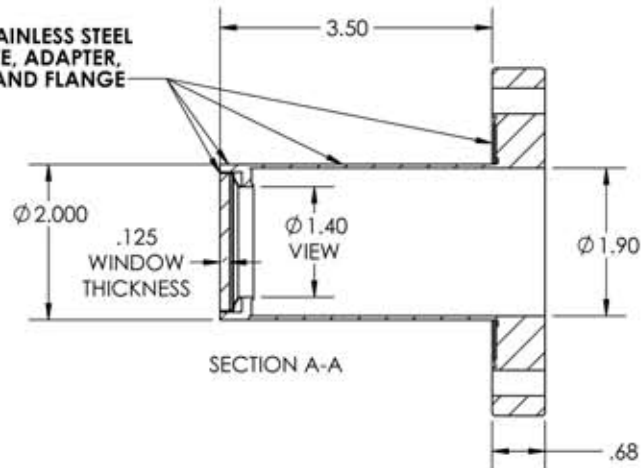


A6665-3-CF

REV
10/8/2013304 STAINLESS STEEL
SLEEVE, ADAPTER,
TUBE AND FLANGE

NOTES:

1. Leak Rate: $<2 \times 10^{-10}$ atm/cc sec He
2. Parallelism: <10 Arc Seconds
3. Flatness: $\lambda/4$ @ 632nm Transmitted Wavefront
4. Surface Finish: 20/10 Scratch-Dig
5. Thermal Range: -100°C To 200°C
6. Material: Corning HPFS 7980 Excimer Grade 193 Fused Silica
7. Transmission: $>99.5\%$ @ 193nm (Internal)
8. Homogeneity Grade: A
9. Inclusion Class: 0

EUV Grade (Laser) Fused Silica Viewport, Re-entrant Design,
3.50" In-Vacuum Length, 1.40" View Dia, 4.50" Conflat Flange

APPROVED

TITLE:
VIEWPORT, FUSED SILICA,
EUV, RE-ENTRANT, 1.4 VIEW,
450CF

PROPRIETARY AND CONFIDENTIAL		UNLESS OTHERWISE SPECIFIED:		MPF PRODUCTS INC.			EUV, RE-ENTRANT, 1.4 VIEW, 450CF				
ANY REPRODUCTION IN PART OR AS A WHOLE WITHOUT THE WRITTEN PERMISSION OF MPF PRODUCTS INC. IS PROHIBITED.		DIMENSIONS ARE IN INCHES TOLERANCES:				FINISH CONFLAT	DRAWN BY WJ	DATE 10/02/2013	SIZE A	DWG. NO. A6665-3-CF	REV
USED ON:		ANGULAR: MACH: 1/2" TWO PLACE DECIMAL THREE PLACE DECIMAL		± .030 ± .015		DO NOT SCALE DRAWING	CHECKED	10/02/2013	10/02/2013	A6665-3-CF	10/02/2013
						ENG APPR.	WJ	10/02/2013	LAST SAVED DATE	Monday, October 07, 2013 8:18:53 AM	