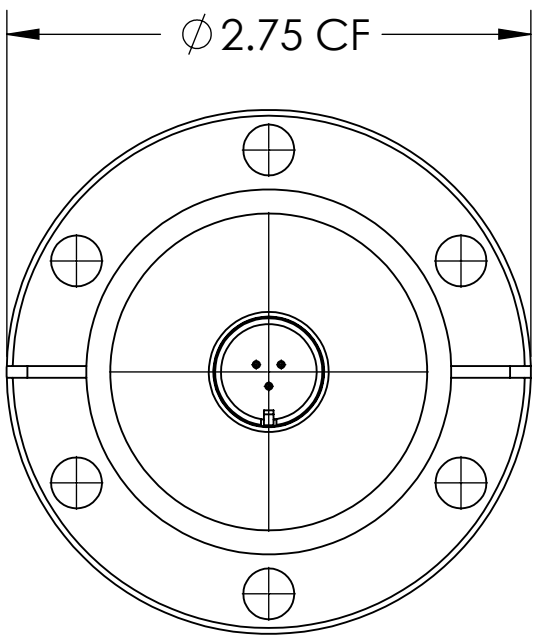
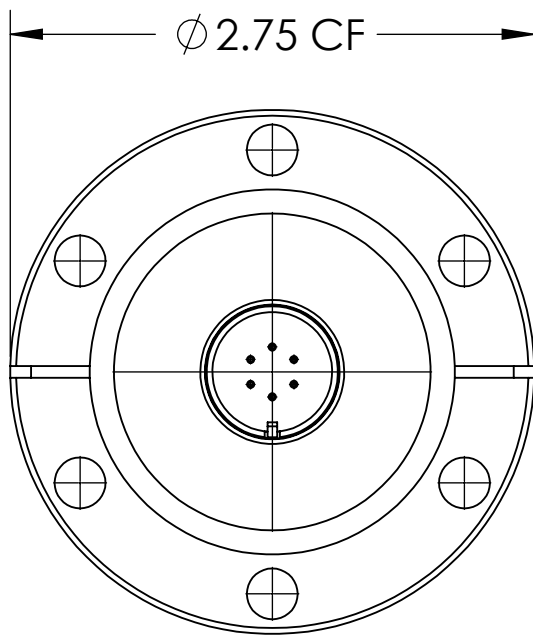


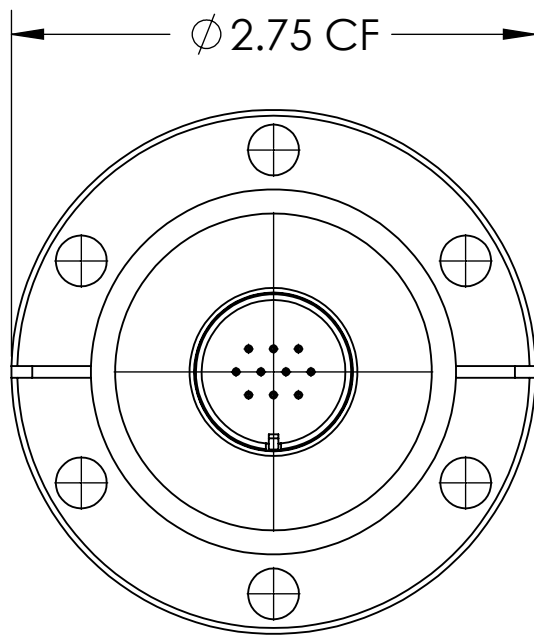
MPF PRODUCTS INC.



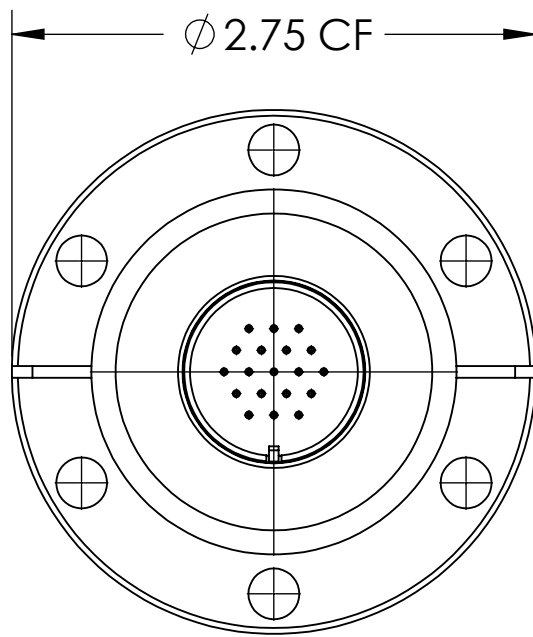
3 AMPS PER PIN
FIGURE I



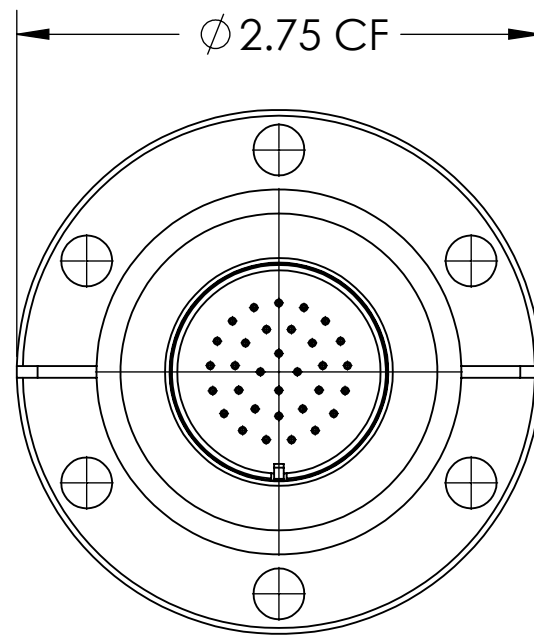
3 AMPS PER PIN
FIGURE II



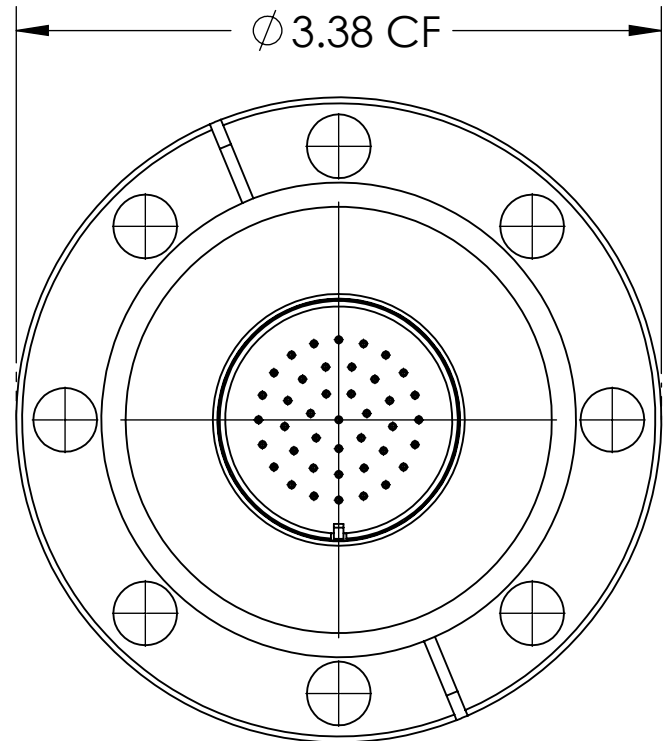
3 AMPS PER PIN
FIGURE III



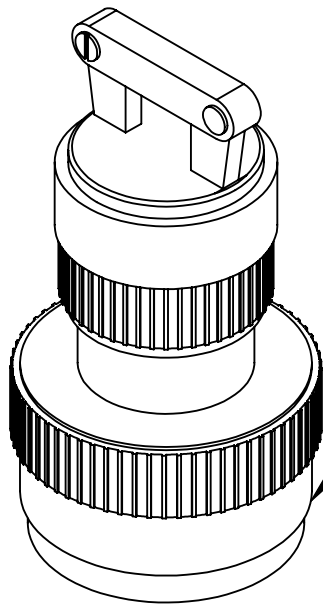
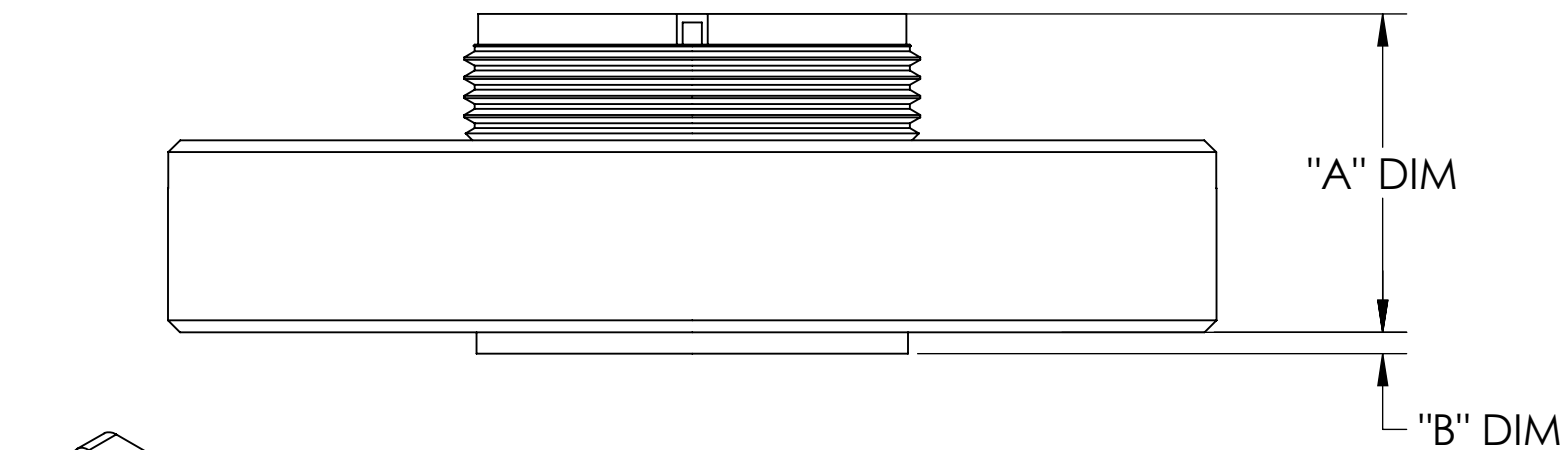
3 AMPS PER PIN
FIGURE IV



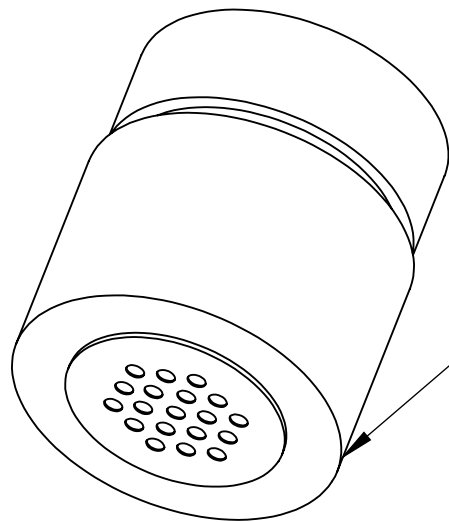
3 AMPS PER PIN
FIGURE V



3 AMPS PER PIN
FIGURE VI



AIRSIDE
CONNECTOR



VACUUM SIDE
CONNECTOR
(19 PIN PICTURED)

PART #	FIGURE #	"A" DIM	"B" DIM	CONNECTOR TYPE
A8232-1-CF	I	.829	.056	3 PIN POWER
A8232-2-CF	II	.829	.056	6 PIN POWER
A8232-3-CF	III	.829	.056	10 PIN POWER
A8232-4-CF	IV	.829	.056	19 PIN POWER
A8232-5-CF	V	.829	.056	32 PIN POWER
A8232-6-CF	VI	1.02	OMIT	41 PIN POWER

* CONNECTORS INCLUDE O-RING & CRIMP PINS

MS Circular Connector Series, Multipin Feedthrough, 3,6,10,19,32 & 41 Pins, 1000 Volts Double-Ended w/
Air & Vacuum-side Connectors, 2.75" & 3.38" Conflat Flange

UNLESS OTHERWISE SPECIFIED:		QUOTATION #		N/A	APPROVED	
DIMENSIONS ARE IN INCHES TOLERANCES: ANGULAR: MACH ± 1/2° TWO PLACE DECIMAL ± .030 THREE PLACE DECIMAL ± .015 MATERIAL		NAME	DATE	MPF PRODUCTS INC. TITLE: MULTIPIN, MS CIRCULAR, 1000V DOUBLE-ENDED, CF FLANGE DOWNLOADED FROM MPFPI.COM DWG. NO.		