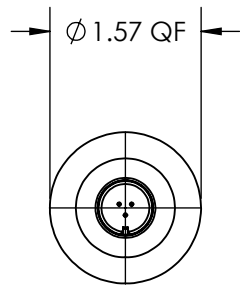


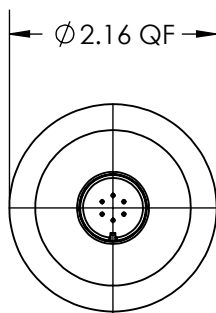
A8233

REV

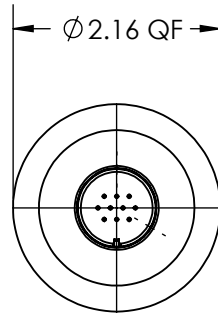
8/13/2014



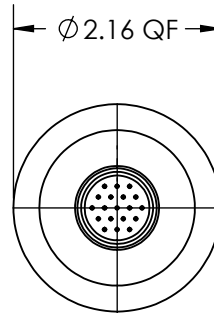
5 AMPS PER PIN  
FIGURE I



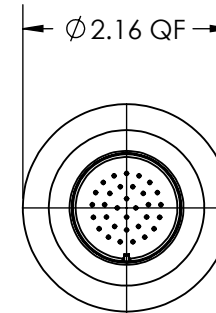
5 AMPS PER PIN  
FIGURE II



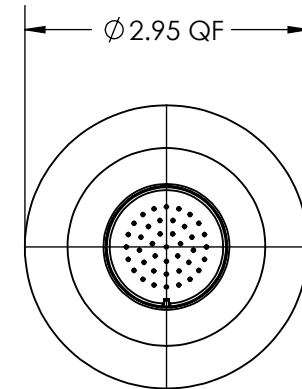
5 AMPS PER PIN  
FIGURE III



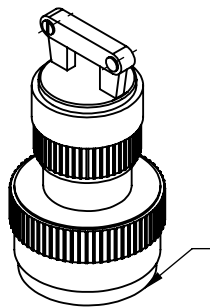
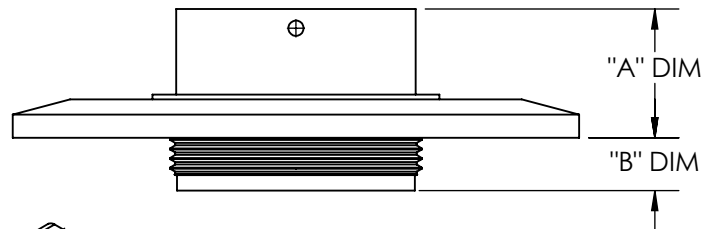
3 AMPS PER PIN  
FIGURE IV



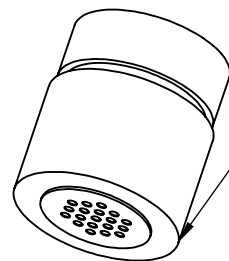
3 AMPS PER PIN  
FIGURE V



3 AMPS PER PIN  
FIGURE VI



AIRSIDE  
CONNECTOR



VACUUM SIDE  
CONNECTOR  
( 19 PIN PICTURED )

PART #	FIGURE #	"A" DIM	"B" DIM	CONNECTOR TYPE
A8233-1-QF	I	.610	.275	3 PIN POWER
A8233-2-QF	II	.610	.275	6 PIN POWER
A8233-3-QF	III	.610	.275	10 PIN POWER
A8233-4-QF	IV	.610	.275	19 PIN POWER
A8233-5-QF	V	.610	.275	32 PIN POWER
A8233-6-QF	VI	.670	.275	41 PIN POWER

\* CONNECTORS INCLUDE O-RING & CRIMP PINS

APPROVED

MS Circular Connector Series, Multipin Feedthrough, 3,6,10,19,32 & 41 Pins, 1000 Volts Double-Ended w/ Air & Vacuum-side Connectors, 1.57", 2.16" & 2.95" Quick Flange

TITLE:

MULTIPIN, MS CIRCULAR, 1000V  
DOUBLE-ENDED, QF FLANGE

PROPRIETARY AND CONFIDENTIAL

UNLESS OTHERWISE SPECIFIED:

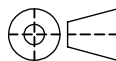
MPF PRODUCTS INC.

ANY REPRODUCTION IN PART OR AS A WHOLE WITHOUT THE WRITTEN PERMISSION OF MPF PRODUCTS INC. IS PROHIBITED.

USED ON:

DIMENSIONS ARE IN INCHES  
TOLERANCES:

ANGULAR: MACH  $\pm 1/2^\circ$   
TWO PLACE DECIMAL  
THREE PLACE DECIMAL



$\pm .030$   
 $\pm .015$

FINISH  
QUICK FLANGE

DO NOT SCALE DRAWING

DRAWN BY

JB

DATE

CHECKED

ENG APPR.

JB

SIZE  
**A**

DWG. NO.

**A8233**

REV

8/13/2014

LAST SAVED DATE

Wednesday, August 13, 2014 6:59:31 AM