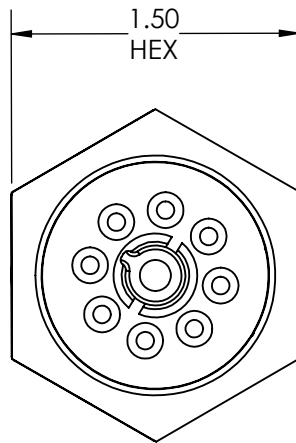
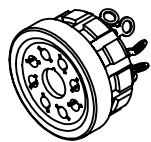
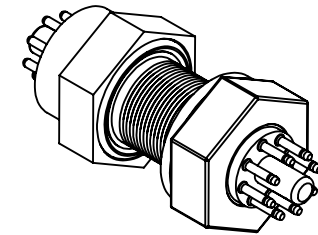
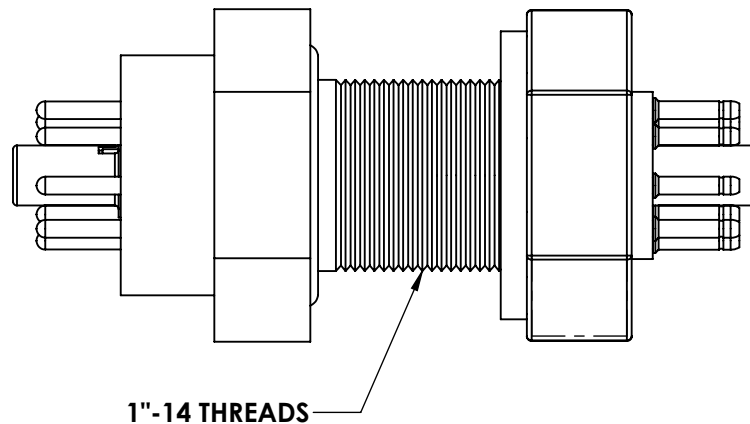
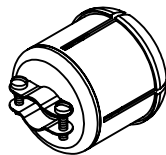
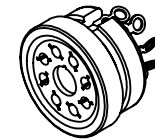


A3533-1-BP

REV
11/7/2013AIRSIDE
CONNECTORAIRSIDE
CONNECTOR
COVERVACUUM SIDE
CONNECTOR

APPROVED

Multipin Feedthrough, 8 Pin 'Octal' Design, 700 Volts, 10 Amps per Pin, Double-Ended
w/ Air & Vacuum-side Connectors, 1.0" Baseplate Bolt

TITLE:

MULTIPIN, 8 PIN 'OCTAL', 1000V, 5A
DOUBLE-ENDED, BASEPLATE

PROPRIETARY AND CONFIDENTIAL

UNLESS OTHERWISE SPECIFIED:

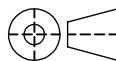
MPF PRODUCTS INC.

ANY REPRODUCTION IN PART OR AS A WHOLE WITHOUT THE
WRITTEN PERMISSION OF MPF PRODUCTS INC. IS PROHIBITED.

USED ON:

DIMENSIONS ARE IN INCHES
TOLERANCES:

ANGULAR: MACH $\pm 1/2^\circ$
TWO PLACE DECIMAL
THREE PLACE DECIMAL



$\pm .030$
 $\pm .015$

FINISH
BASEPLATE

DO NOT SCALE DRAWING

DRAWN BY

JB

DATE

CHECKED

ENG APPR.

JB

SIZE
A

DWG. NO.
A3533-1-BP

REV

11/7/2013

LAST SAVED DATE

Thursday, November 07, 2013 8:41:57 AM