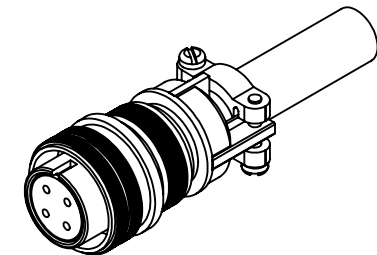
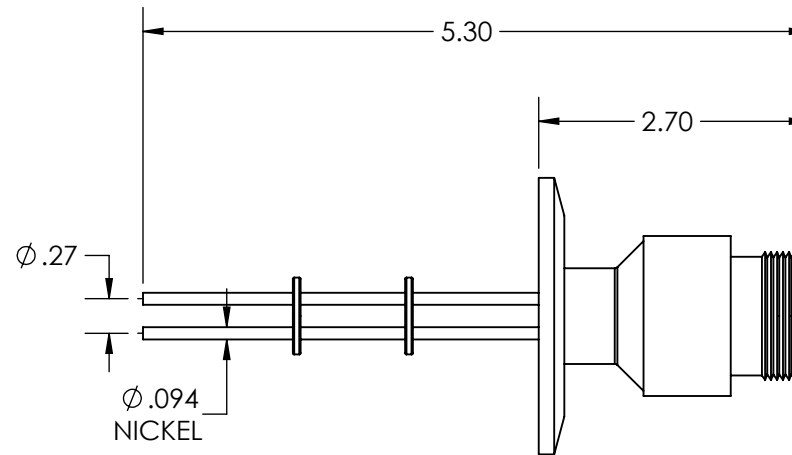
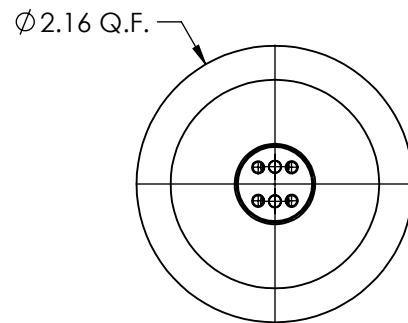
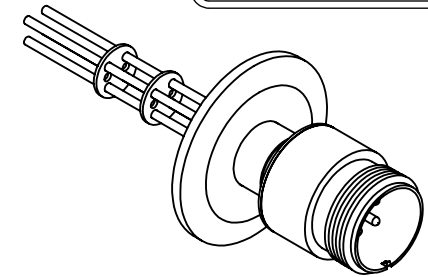


A3992-5-QF

REV  
10/3/2014**APPROVED**

MS High Current Series, Multipin Feedthrough, 4 Pins, 700 Volts, 16 Amps per Pin, 0.094" Nickel Conductors, 2.16" Quick Flange

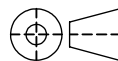
TITLE:

**MULTIPIN, 4 PIN, 700V, 16A, QF40****PROPRIETARY AND CONFIDENTIAL****UNLESS OTHERWISE SPECIFIED:****MPF PRODUCTS INC.**

ANY REPRODUCTION IN PART OR AS A WHOLE WITHOUT THE WRITTEN PERMISSION OF MPF PRODUCTS INC. IS PROHIBITED.

DIMENSIONS ARE IN INCHES  
TOLERANCES:

ANGULAR: MACH  $\pm 1/2^\circ$   
TWO PLACE DECIMAL  
THREE PLACE DECIMAL



$\pm .030$   
 $\pm .015$

FINISH  
**QF FLANGE**

DO NOT SCALE DRAWING

DRAWN BY

JB

DATE

CHECKED

ENG APPR.

JB

SIZE  
**A**

DWG. NO.  
**A3992-5-QF**

REV

10/3/2014

LAST SAVED DATE

Friday, October 03, 2014 7:02:12 AM