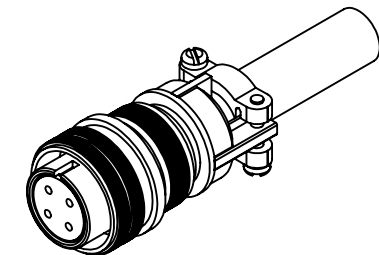
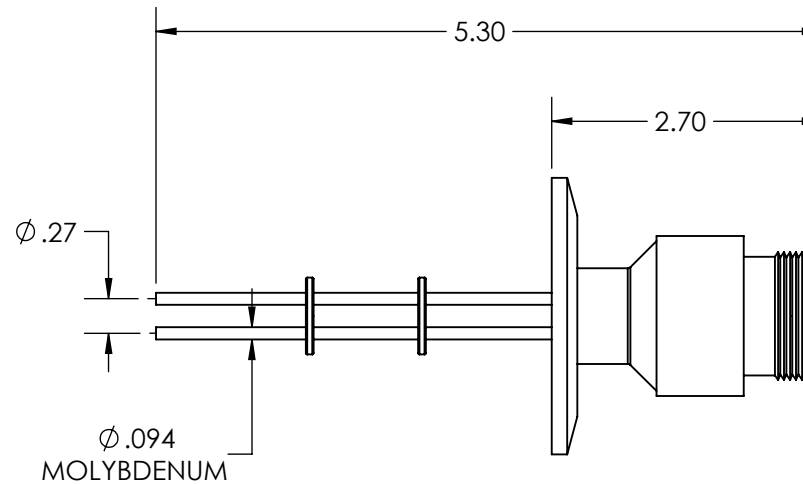
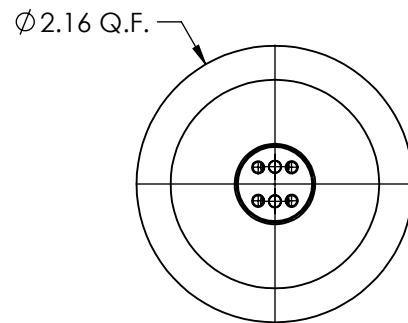
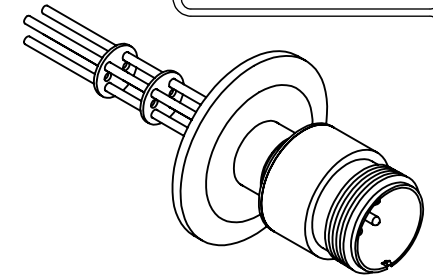


A3992-7-QF

REV  
10/3/2014

APPROVED

MS High Current Series, Multipin Feedthrough, 4 Pins, 700 Volts, 28 Amps per Pin, 0.094" Moly Conductors, 2.16" Quick Flange

TITLE:

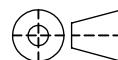
MULTIPIN, 4 PIN, 700V, 28A, QF40

PROPRIETARY AND CONFIDENTIAL

UNLESS OTHERWISE SPECIFIED:

MPF PRODUCTS INC.

ANY REPRODUCTION IN PART OR AS A WHOLE WITHOUT THE WRITTEN PERMISSION OF MPF PRODUCTS INC. IS PROHIBITED.

DIMENSIONS ARE IN INCHES  
TOLERANCES:ANGULAR: MACH  $\pm 1/2^\circ$   
TWO PLACE DECIMAL  
THREE PLACE DECIMAL $\pm .030$   
 $\pm .015$ FINISH  
QF FLANGE

DRAWN BY

JB

DATE

CHECKED

ENG APPR.

JB

DO NOT SCALE DRAWING

SIZE  
ADWG. NO.  
A3992-7-QF

REV

10/3/2014

LAST SAVED DATE

Friday, October 03, 2014 7:04:35 AM