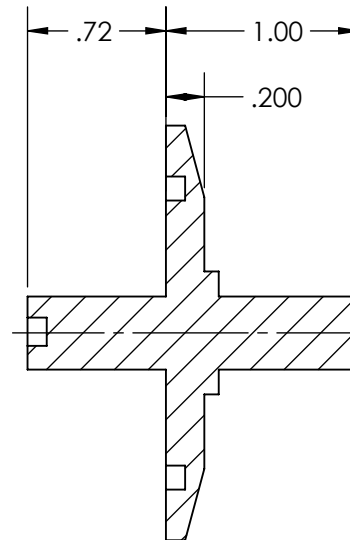
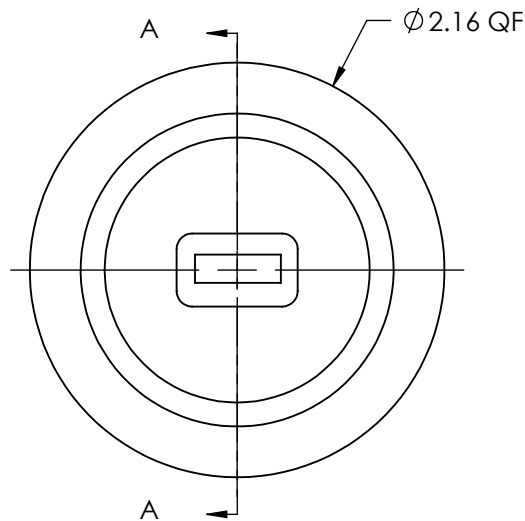
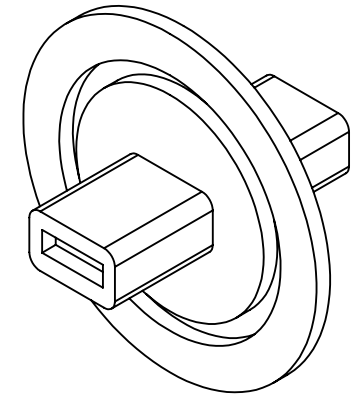


- NOTES:
1. DOUBLE-ENDED (STANDARD FEMALE RECEPTACLE/STANDARD FEMALE RECEPTACLE) CONFIGURATION WITHIN THE WELD INTERFACE AT THE MID-SECTION.
  2. INTERFACES CONFORM TO UNIVERSAL SERIAL BUS SPECIFICATIONS REVISION 2.0 SERIES A RECEPTACLE.
  3. INCORPORATES BERYLLIUM-COPPER CONTACTS INDIVIDUALLY SEALED USING CERAMAX PROPRIETARY CERAMIC TO ESTABLISH A DURABLE HERMETIC SEAL.
  4. LEAK RATE: LESS THAN OR EQUAL TO  $2 \times 10^{-10}$  CC/SEC  $\text{He}$  AT ONE ATMOSPHERE DIFFERENTIAL PRESSURE.
  5. TEST TO  $1 \times 10^{-9}$  CC/SEC  $\text{He}$  AT ONE ATMOSPHERE DIFFERENTIAL PRESSURE.
  6. MATERIALS:
    - CONTACTS: BERYLLIUM-COPPER ALLOY 172/173 IN ACCORDANCE WITH ASTM B196/197
    - DIELECTRIC: CERAMAX PROPRIETARY CERAMIC
    - SHELL: STAINLESS STEEL ALLOY 304L IN ACCORDANCE WITH SAE AMS-WW-S-763.
    - INTERFACE INSULATOR: 30% GLASS FILLED POLYBUTYLENE TEREPHTHALATE, MINIMUM UL94-N0 RATED.
    - VACUUM FLANGE: 304L STAINLESS STEEL
  7. FINISH:
    - CONTACTS: NICKEL PLATED PER QQ-N-290, .000100/.000250 THICK
    - GOLD PLATED PER ASTM B488-01, TYPE II, CODE C, .000050/.000100 THICK
    - SHELL: PASSIVIATED PER QQ-P-35.



SECTION A-A

APPROVED

USB Feedthrough, 1 Pin, Double-Ended, 2.16" Quick Flange

TITLE: **MULTIPIN,  
USB 2.0 INSTRUMENTATION,  
1 PIN, UHV FEEDTHRU, QF40**

PROPRIETARY AND CONFIDENTIAL

UNLESS OTHERWISE SPECIFIED:

MPF PRODUCTS INC.

ANY REPRODUCTION IN PART OR AS A WHOLE WITHOUT THE  
WRITTEN PERMISSION OF MPF PRODUCTS INC. IS PROHIBITED.

NEXT ASSEMBLY USED ON

DIMENSIONS ARE IN INCHES  
TOLERANCES:ANGULAR: MACH  $\pm 1/2^\circ$ TWO PLACE DECIMAL  $\pm .030$ THREE PLACE DECIMAL  $\pm .015$ FINISH  
**CONFLAT**

DO NOT SCALE DRAWING

DRAWN BY

WJ

DATE  
08/17/2010

CHECKED

GS

08/17/2010

ENG APPR.

WJ

08/17/2010

SIZE

**A**

DWG. NO.

**A12310-1-QF**

REV

10/8/2014

LAST SAVED DATE

Wednesday, October 08, 2014 3:39:17 PM