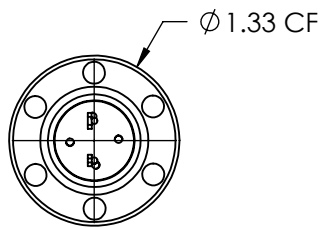


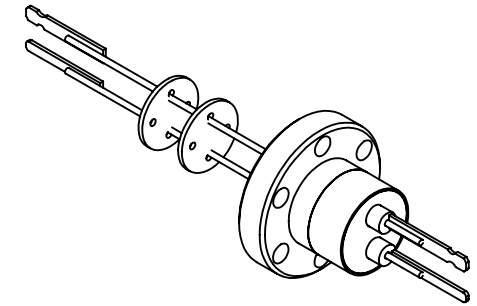
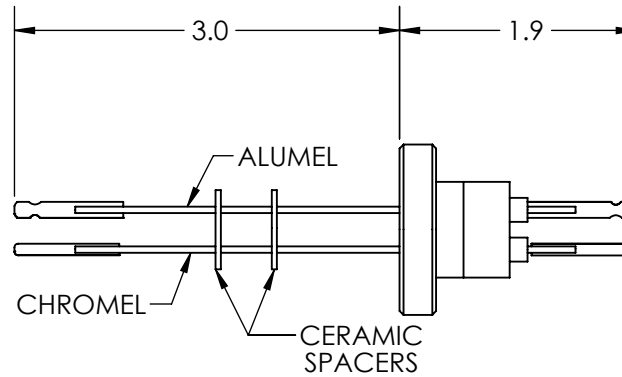
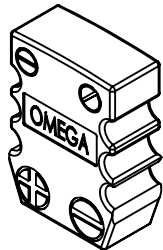
A10768-1-CF

REV
4/28/2014

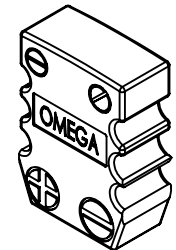
Q4759



VACUUM SIDE CONNECTOR



AIR SIDE CONNECTOR



APPROVED

Thermocouple Feedthrough, Type K, 1 Pair, Double Ended w/ Air & Vacuum-side Miniature Connector, 1.33" Conflat Flange

TITLE:

THERMOCOUPLE, TYPE K,
1 PAIR, CONNECTOR,
DOUBLE ENDED, 133CF

PROPRIETARY AND CONFIDENTIAL

UNLESS OTHERWISE SPECIFIED:

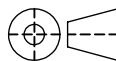
MPF PRODUCTS INC.

ANY REPRODUCTION IN PART OR AS A WHOLE WITHOUT THE WRITTEN PERMISSION OF MPF PRODUCTS INC. IS PROHIBITED.

USED ON:

DIMENSIONS ARE IN INCHES
TOLERANCES:

ANGULAR: MACH $\pm 1/2^\circ$
TWO PLACE DECIMAL
THREE PLACE DECIMAL



$\pm .030$
 $\pm .015$

FINISH
CONFLAT

DO NOT SCALE DRAWING

DRAWN BY

JB

DATE
03/29/2012

CHECKED

WJ

03/29/2012

ENG APPR.

JB

03/29/2012

SIZE
A

DWG. NO.

A10768-1-CF

REV

4/28/2014

LAST SAVED DATE

Monday, April 28, 2014 9:10:39 AM