

A0192

REV

5/28/2013

## NOTES:

## \* TYPE K:

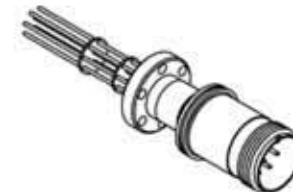
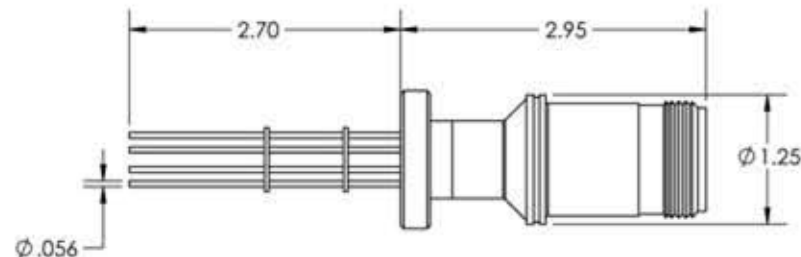
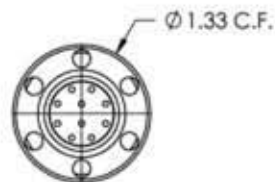
ALUMEL CONDUCTORS HAVE A NEGATIVE POLARITY ( **MAGNETIC** ) AND THE VACUUM SIDE ENDS ARE FLAT.  
CHROMEL CONDUCTORS HAVE A POSITIVE POLARITY ( **NON - MAGNETIC** ) AND THE VACUUM SIDE ENDS HAVE A RADIUS.

## \* TYPE J:

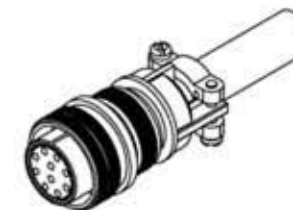
CONSTANTAN CONDUCTORS HAVE A NEGATIVE POLARITY ( **NON - MAGNETIC** ) AND THE VACUUM SIDE ENDS ARE FLAT.  
IRON CONDUCTORS HAVE A POSITIVE POLARITY ( **MAGNETIC** ) AND THE VACUUM SIDE ENDS HAVE A RADIUS.

## \* TYPE E:

CONSTANTAN CONDUCTORS HAVE A NEGATIVE POLARITY ( **NON - MAGNETIC** ) AND THE VACUUM SIDE ENDS ARE FLAT.  
CHROMEL CONDUCTORS HAVE A POSITIVE POLARITY ( **NON - MAGNETIC** ) AND THE VACUUM SIDE ENDS HAVE A RADIUS.



PART #	T/C TYPE	# OF PAIRS
A0192-1-CF	K	2
A0192-2-CF	J	2
A0192-3-CF	E	2
A0192-5-CF	K	3
A0192-6-CF	J	3
A0192-7-CF	E	3
A0192-9-CF	K	5
A0192-10-CF	J	5
A0192-11-CF	E	5



APPROVED

MS Series, Thermocouple Feedthrough, 2, 3, and 5 Pairs, Type K, J, and E, w/ Air-side Connector  
1.33" Conflat Flange

## TITLE:

THERMOCOUPLE 2, 3, AND 5 PAIRS  
TYPE K, J, AND E  
MS CONNECTOR, 133CF

PROPRIETARY AND CONFIDENTIAL

UNLESS OTHERWISE SPECIFIED:

MPF PRODUCTS INC.

ANY REPRODUCTION IN PART OR AS A WHOLE WITHOUT THE  
WRITTEN PERMISSION OF MPF PRODUCTS INC. IS PROHIBITED.

USED ON:

DIMENSIONS ARE IN INCHES  
TOLERANCES:

ANGULAR: MACH ± 1/2 °  
TWO PLACE DECIMAL  
THREE PLACE DECIMAL



FINISH

CF FLANGE

DO NOT SCALE DRAWING

DRAWN BY

JB

DATE

CHECKED

ENG APPR.

JB

SIZE

A

DWG. NO.

A0192

REV

5/28/2013

LAST SAVED DATE

Thursday, May 16, 2013 8:49:03 AM