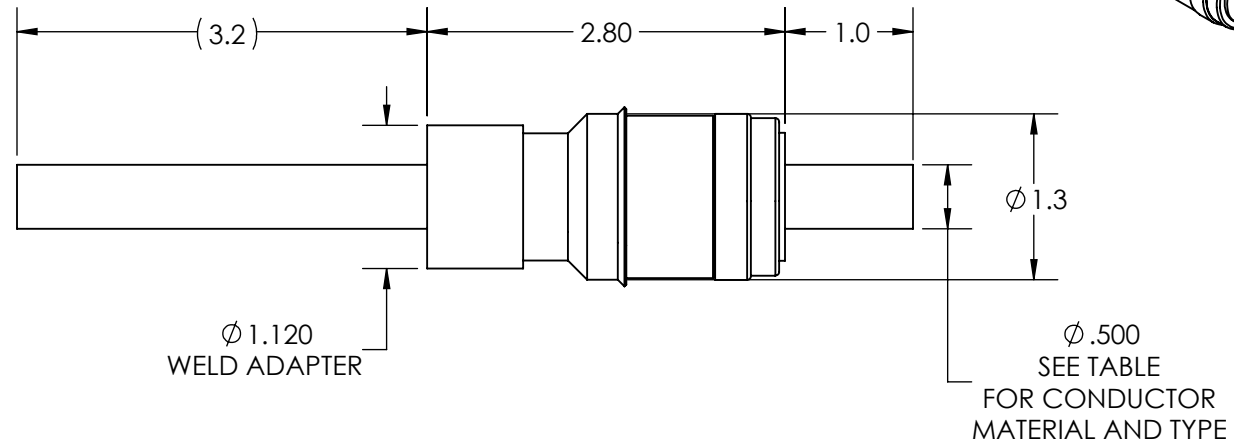
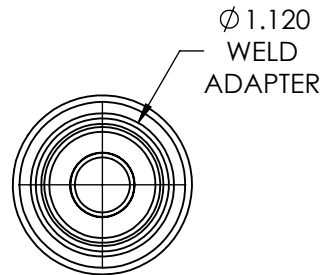


A8205

REV

8/1/2014



PART #	CONDUCTOR TYPE	CONDUCTOR MATERIAL	AMPS
A8205-1-W	TUBE (.035 WALL)	304 STN STL	N/A
A8205-2-W	TUBE (.032 WALL)	OFHC COPPER	N/A
A8205-3-W	ROD	304 STN STL	30
A8205-4-W	ROD	NICKEL 200	140
A8205-5-W	ROD	OFHC COPPER	450

APPROVED

Power Feedthrough, 8000 Volts, 1 Pin, 0.50" Conductor, 1.12" Dia Stainless Steel Weld Adapter

TITLE:

POWER, 8KV, 1PIN, WELD

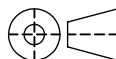
PROPRIETARY AND CONFIDENTIAL

UNLESS OTHERWISE SPECIFIED:

MPF PRODUCTS INC.

ANY REPRODUCTION IN PART OR AS A WHOLE WITHOUT THE WRITTEN PERMISSION OF MPF PRODUCTS INC. IS PROHIBITED.

USED ON:

DIMENSIONS ARE IN INCHES
TOLERANCES:ANGULAR: MACH $\pm 1/2^\circ$
TWO PLACE DECIMAL
THREE PLACE DECIMAL $\pm .030$
 $\pm .015$ FINISH
WELDABLE

DO NOT SCALE DRAWING

DRAWN BY

JB

DATE

CHECKED

ENG APPR.

JB

SIZE
A

DWG. NO.

A8205

REV

8/1/2014

LAST SAVED DATE

Friday, August 01, 2014 6:50:54 AM