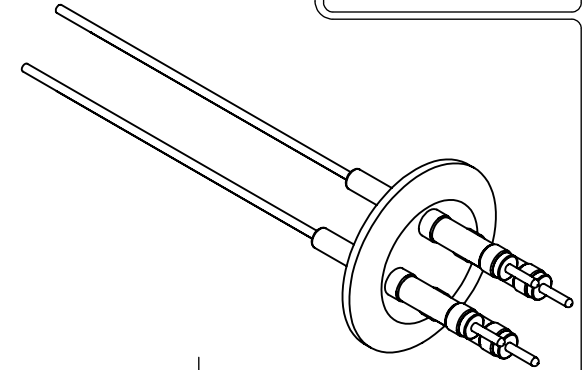
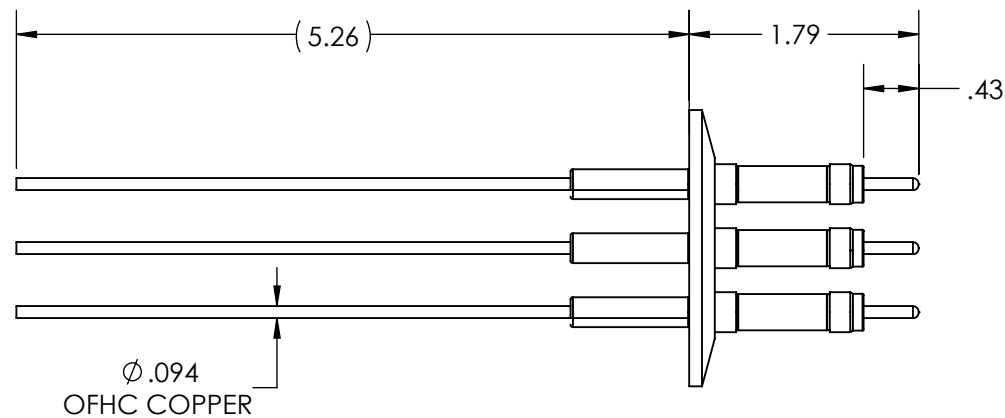
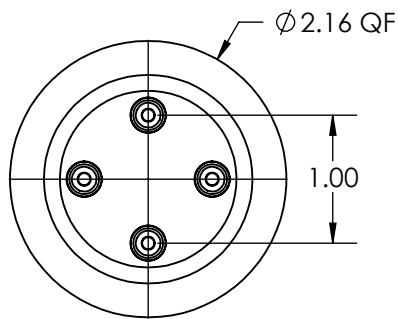
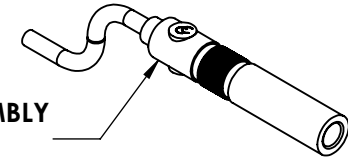


A5978-1-QF

REV  
9/11/2013

INCLUDES 96" AIRSIDE CONNECTOR / CABLE ASSEMBLY  
( PART #A2459-2-CN )

**APPROVED**

Power Feedthrough with Power Glove Connectors, 10,000 Volts, 30 Amps, 4 Pins, 0.094" Copper Conductors  
2.16" Quick Flange

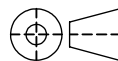
TITLE:

POWER GLOVE, 10KV, 30A, 4PIN, QF40

PROPRIETARY AND CONFIDENTIAL

UNLESS OTHERWISE SPECIFIED:

MPF PRODUCTS INC.

ANY REPRODUCTION IN PART OR AS A WHOLE WITHOUT THE  
WRITTEN PERMISSION OF MPF PRODUCTS INC. IS PROHIBITED.DIMENSIONS ARE IN INCHES  
TOLERANCES:ANGULAR: MACH  $\pm 1/2^\circ$   
TWO PLACE DECIMAL  
THREE PLACE DECIMAL $\pm .030$   
 $\pm .015$ FINISH  
**QUICK FLANGE**

DRAWN BY

JB

DATE

CHECKED

ENG APPR.

JB

DO NOT SCALE DRAWING

SIZE  
**A**DWG. NO.  
**A5978-1-QF**

REV

9/11/2013

LAST SAVED DATE

Wednesday, September 11, 2013 7:08:31 AM

USED ON: