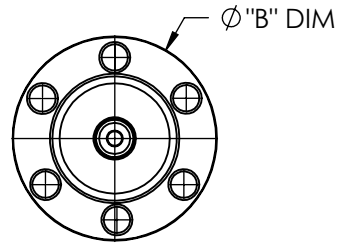
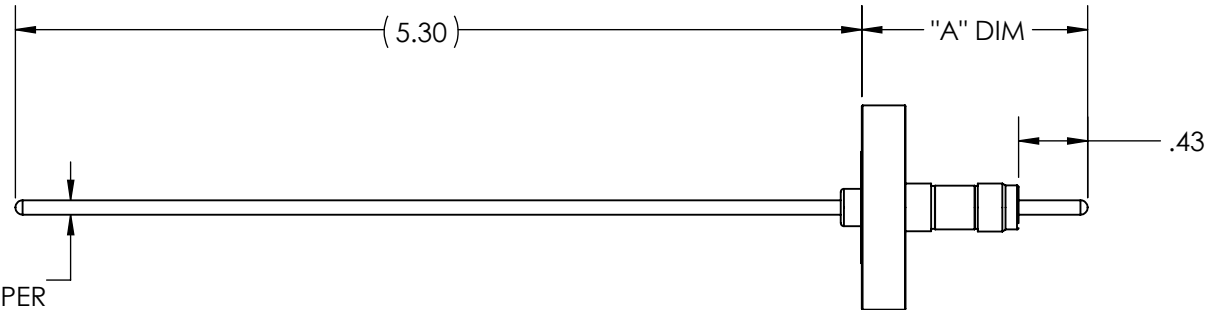


**A2597****REV**

9/11/2013

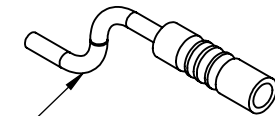


Ø .094  
OFHC COPPER



PART #	"A" DIM	"B" DIM
A2597-1-CF	1.47	1.33
A2597-2-CF	1.68	2.75

INCLUDES 96" AIRSIDE CONNECTOR / CABLE ASSEMBLY  
( PART #A2459-1-CN )

**APPROVED**

**Power Feedthrough with Power Glove Connector, 5000 Volts, 30 Amps, 0.094" Copper Conductor  
1.33" / 2.75" Conflat Flange**

TITLE:

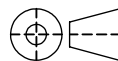
**POWER GLOVE, 5KV, 30A, 133CF/275CF****PROPRIETARY AND CONFIDENTIAL****UNLESS OTHERWISE SPECIFIED:****MPF PRODUCTS INC.**

ANY REPRODUCTION IN PART OR AS A WHOLE WITHOUT THE  
WRITTEN PERMISSION OF MPF PRODUCTS INC. IS PROHIBITED.

USED ON:

DIMENSIONS ARE IN INCHES  
TOLERANCES:

ANGULAR: MACH  $\pm 1/2^\circ$   
TWO PLACE DECIMAL  
THREE PLACE DECIMAL



$\pm .030$   
 $\pm .015$

FINISH  
**CONFLAT**

DO NOT SCALE DRAWING

DRAWN BY

JB

DATE

CHECKED

ENG APPR.

JB

SIZE

**A**

DWG. NO.

**A2597**

REV

9/11/2013

LAST SAVED DATE

Tuesday, September 10, 2013 11:52:30 AM