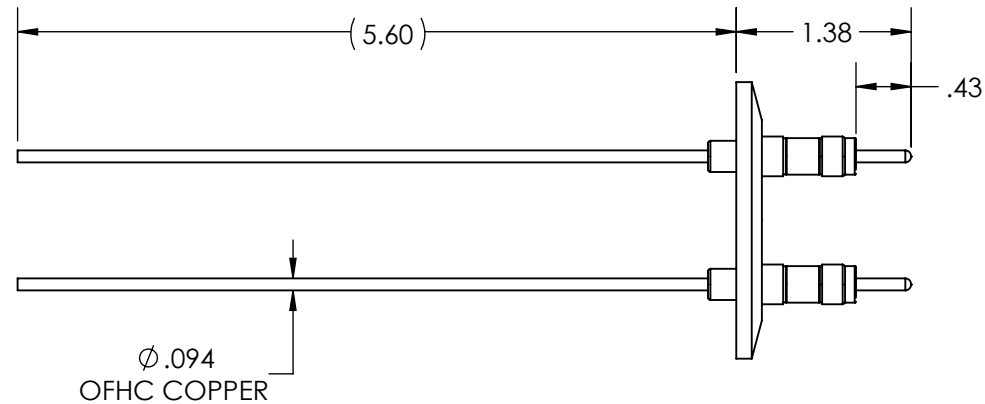
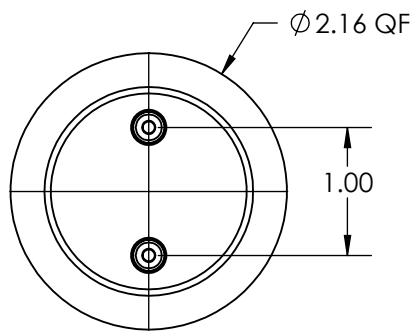
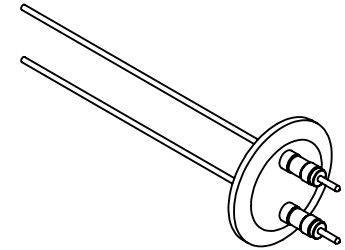
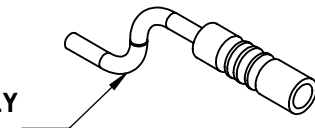


A5971-1-QF

REV
9/11/2013

INCLUDES 96" AIRSIDE CONNECTOR / CABLE ASSEMBLY
(PART #A2459-1-CN)

**APPROVED**

Power Feedthrough with Power Glove Connectors, 5000 Volts, 30 Amps, 2 Pins, 0.094" Copper Conductors
2.16" Quick Flange

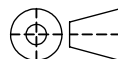
TITLE:

POWER GLOVE, 5KV, 30A, 2PIN, QF40

PROPRIETARY AND CONFIDENTIAL

UNLESS OTHERWISE SPECIFIED:

MPF PRODUCTS INC.

ANY REPRODUCTION IN PART OR AS A WHOLE WITHOUT THE
WRITTEN PERMISSION OF MPF PRODUCTS INC. IS PROHIBITED.DIMENSIONS ARE IN INCHES
TOLERANCES:ANGULAR: MACH $\pm 1/2^\circ$
TWO PLACE DECIMAL
THREE PLACE DECIMAL $\pm .030$
 $\pm .015$ FINISH
QUICK FLANGE

DRAWN BY

JB

DATE

CHECKED

ENG APPR.

JB

SIZE

A

DWG. NO.

A5971-1-QF

REV

9/11/2013

LAST SAVED DATE

Wednesday, September 11, 2013 7:09:10 AM

USED ON:

DO NOT SCALE DRAWING