

A1601

REV

11/06/2013

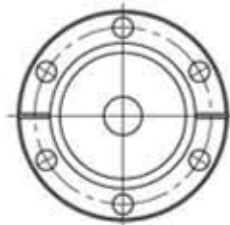
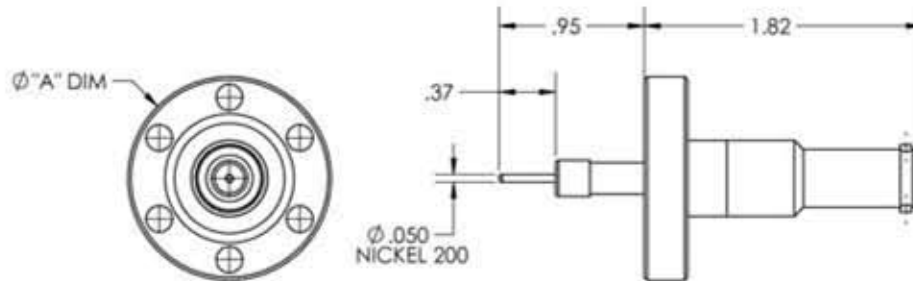


FIG. 1

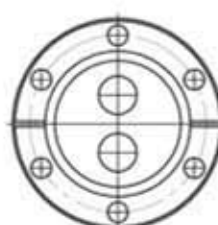


FIG. 2

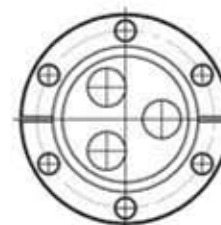


FIG. 3

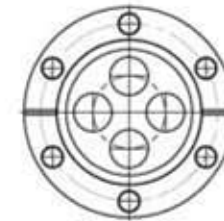


FIG. 4

PART NO.	FEEDTHRU QTY.	A Ø	BOLT CIRCLE	FIG. NO.	CONNECTOR QTY
A1601-1-CF	1	1.33	N/A	1	1
A1601-2-CF	1	2.73	N/A	1	1
A1601-3-CF	2	2.73	.75	2	2
A1601-4-CF	3	2.73	.95	3	3
A1601-5-CF	4	2.73	.95	4	4



APPROVED

SHV-10 Coaxial Feedthrough, 1/2/3/4 Pin, Grounded Shield, Exposed Insulator
1.33"/2.75" Conflat Flange

TITLE:
COAXIAL, SHV-10, 1/2/3/4 PIN,
GROUNDED SHIELD EXPOSED,
133/275CF

PROPRIETARY AND CONFIDENTIAL		UNLESS OTHERWISE SPECIFIED:		MPF PRODUCTS INC.				SIZE		DWG. NO.		REV	
ANY REPRODUCTION IN PART OR AS A WHOLE WITHOUT THE WRITTEN PERMISSION OF MPF PRODUCTS INC. IS PROHIBITED. USED ON:		DIMENSIONS ARE IN INCHES TOLERANCES: ANGULAR: MACH: 1/2° TWO PLACE DECIMAL THREE PLACE DECIMAL		FINISH		DRAWN BY	JB	DATE	A	A1601		11/06/2013	
				CONFLAT		CHECKED							
				DO NOT SCALE DRAWING		ENG APPR.	JB		LAST SAVED DATE		Thursday, November 07, 2013 11:09:22 AM		