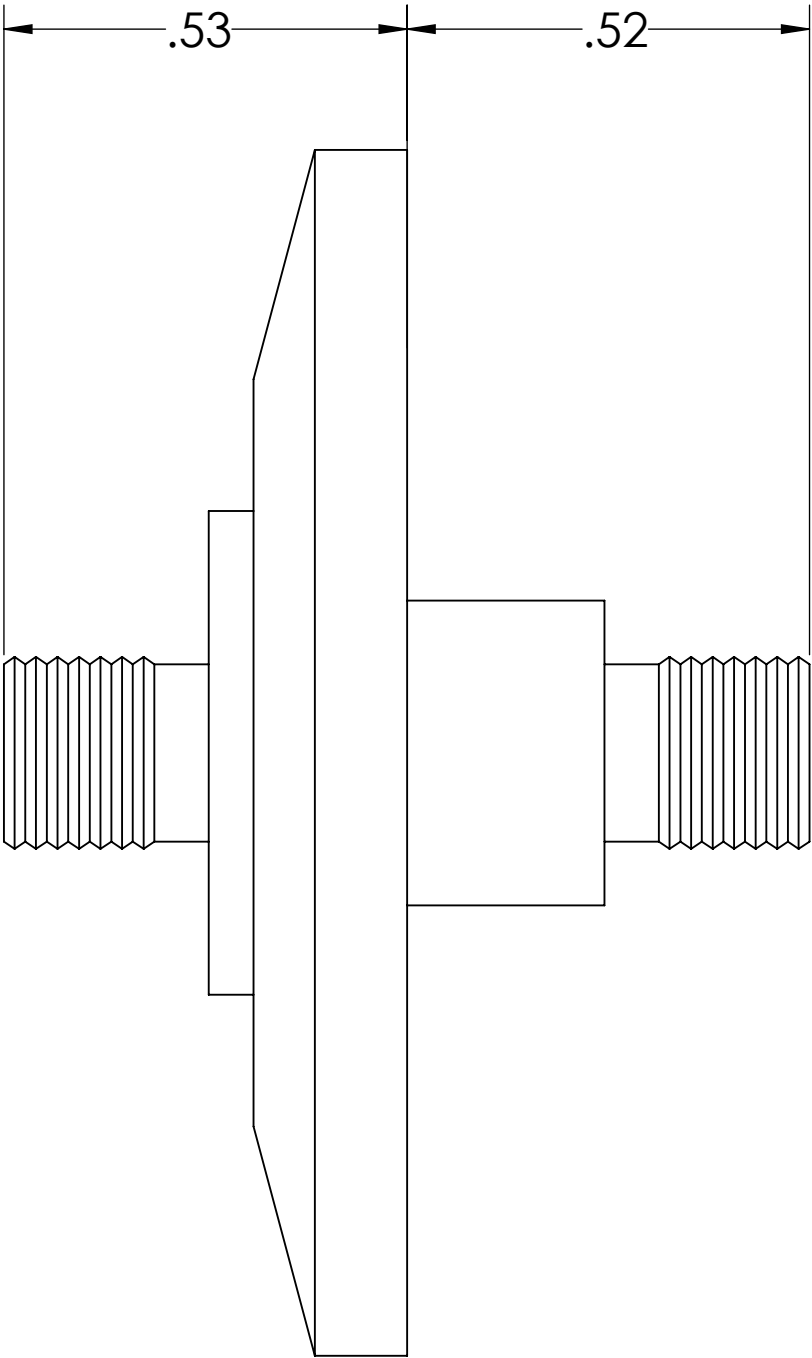
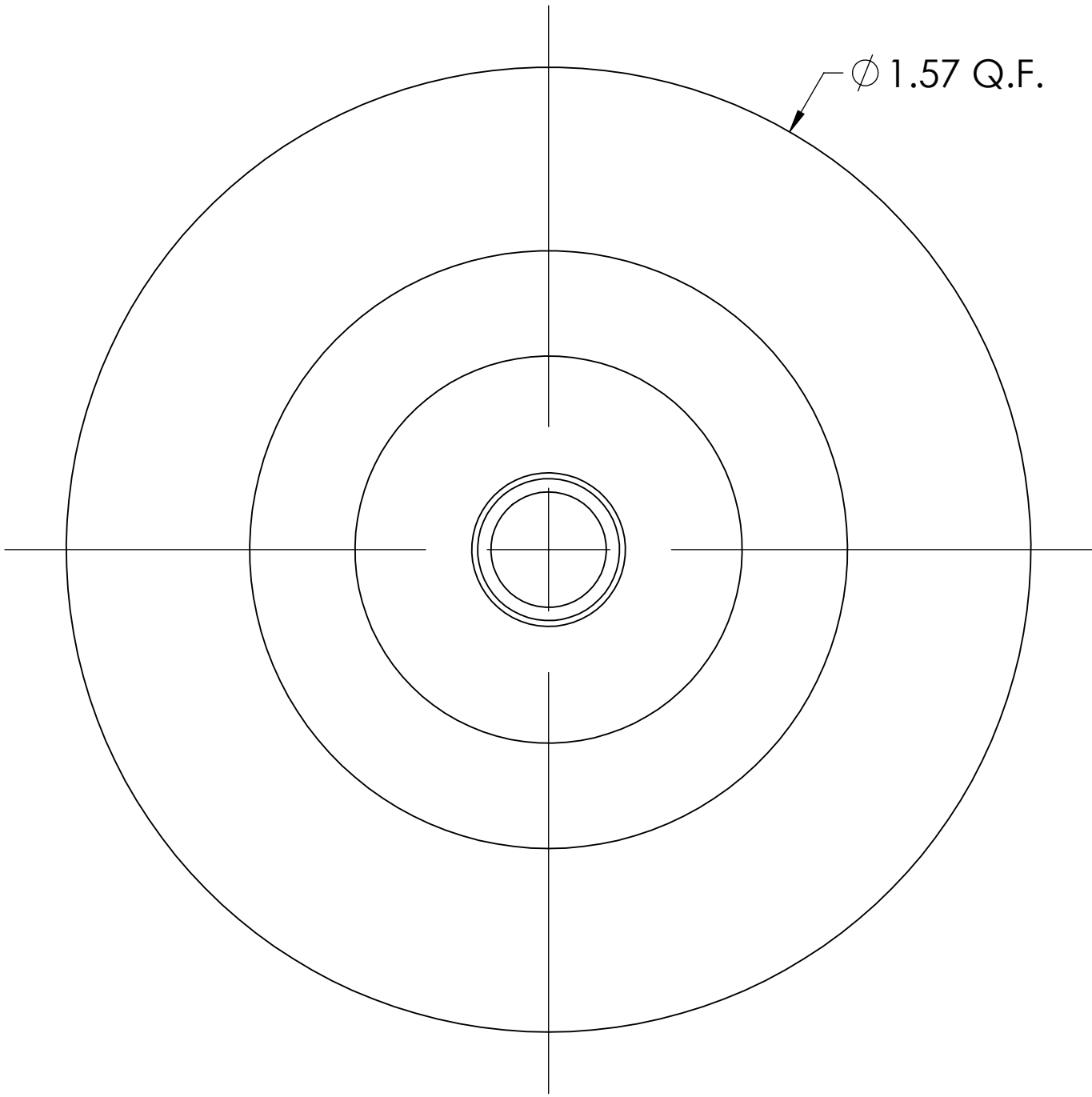


MPF PRODUCTS INC.



- NOTES:
- 1. IMPEDANCE: 50 OHM
 - 2. GREQUENCY RANGE: 0-18GHz
 - 3. VSWR: 1.1+0.01 X f (GHz)
 - 4. MAX VOLTAGE: 1000V
 - 5. TEMPERATURE: -65° TO 200°C
 - 6. LEAK RATE: <5 X 10-10 mbar l/s (He)
 - 7. MATERIALS: SS, BeCu, FeNi, Glass and PTFE
 - 8. PLATING: ALL METAL PARTS GOLD PLATED

High Frequency SMA Coaxial Double Ended Feedthrough, 1 Pin, Matched Impedance @ 50 OHM, 1.57" Quick Flange

THIS DRAWING IS FOR QUOTATION PURPOSES ONLY

UNLESS OTHERWISE SPECIFIED:		QUOTATION #		QUOTATION	
DIMENSIONS ARE IN INCHES TOLERANCES: ANGULAR: MACH ± 1/2° TWO PLACE DECIMAL ± .030 THREE PLACE DECIMAL ± .015 MATERIAL SEE NOTES FINISH SEE NOTES PLATING SEE NOTES		DRAWN	WJ	DATE	11/5/2015
		CHECKED			11/5/2015
		ENG APPR.	WJ		11/5/2015
		THIRD ANGLE:		COAXIAL, HIGH FREQUENCY DOUBLE ENDED SMA, MATCHED IMPEDANCE @ 50 OHM, QF25	
				APPLICATION	
		NEXT ASSY		USED ON	
		SURFACE FINISH:		DWG. NO.	
		UNLESS OTHERWISE SPECIFIED:		REV	
		ALL DIAMETERS CONCENTRIC WITHIN .005. REMOVE ALL BURRS AND SHARP EDGES		A14339-1-QF	
				Downloaded from MPFPI.COM Wednesday, November 25, 2015 8:27:56 AM	