

MPF PRODUCTS INC.

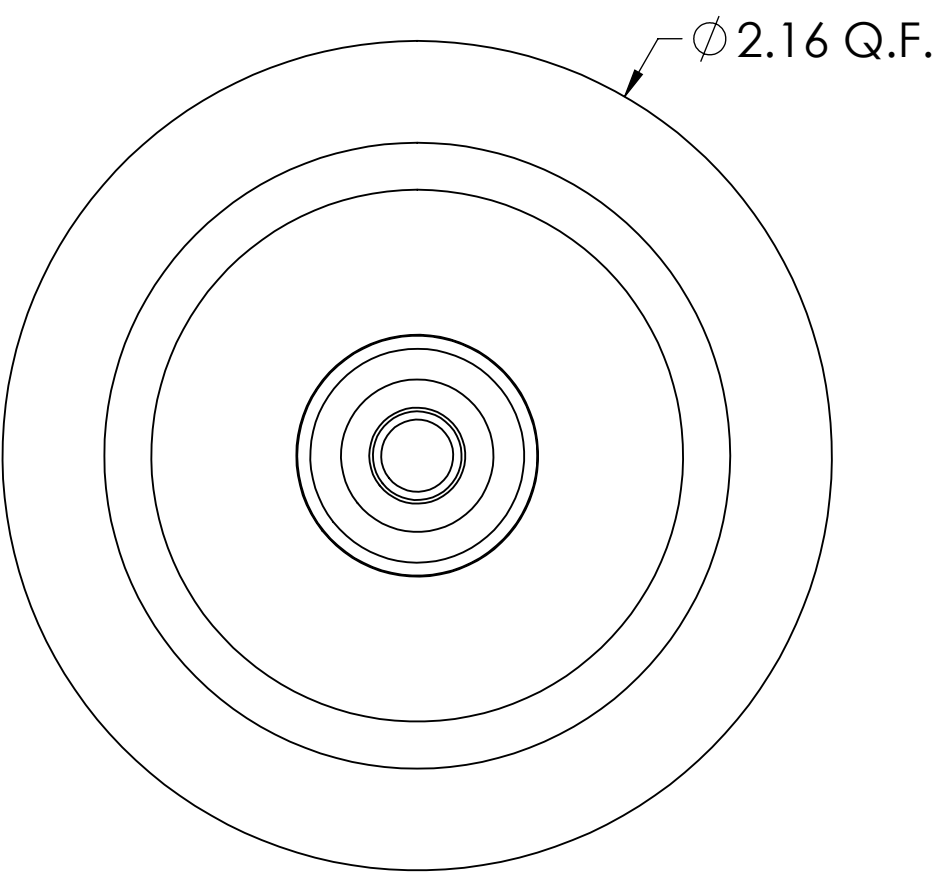


FIGURE I

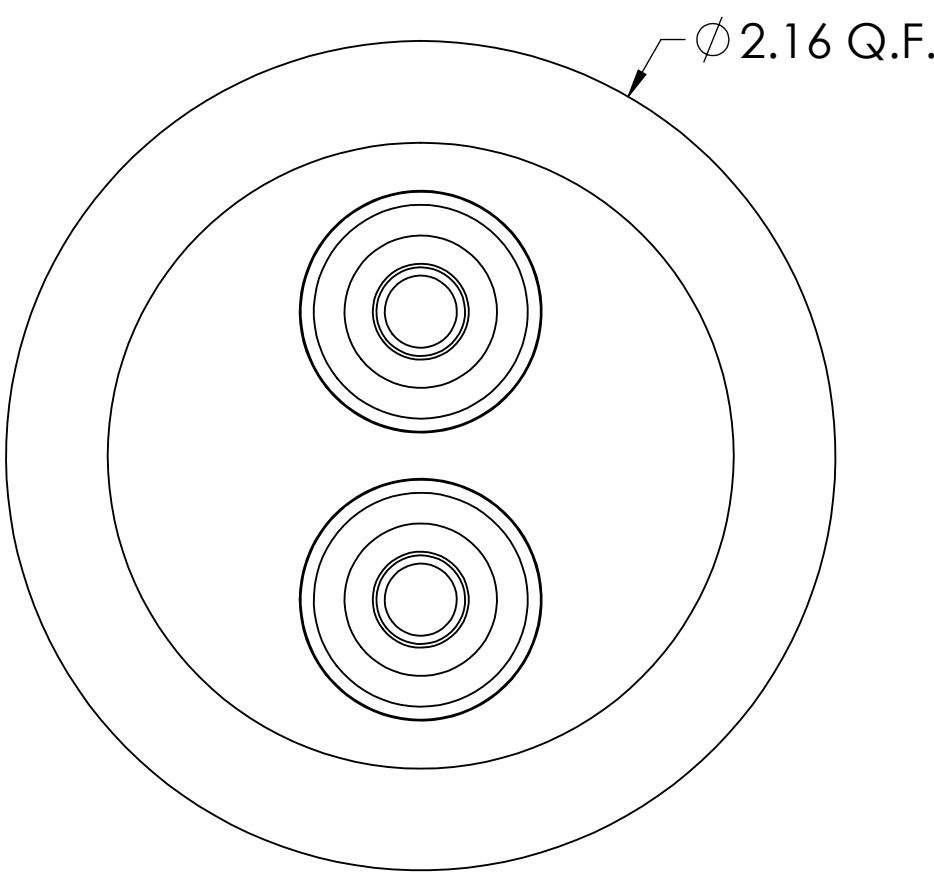


FIGURE II

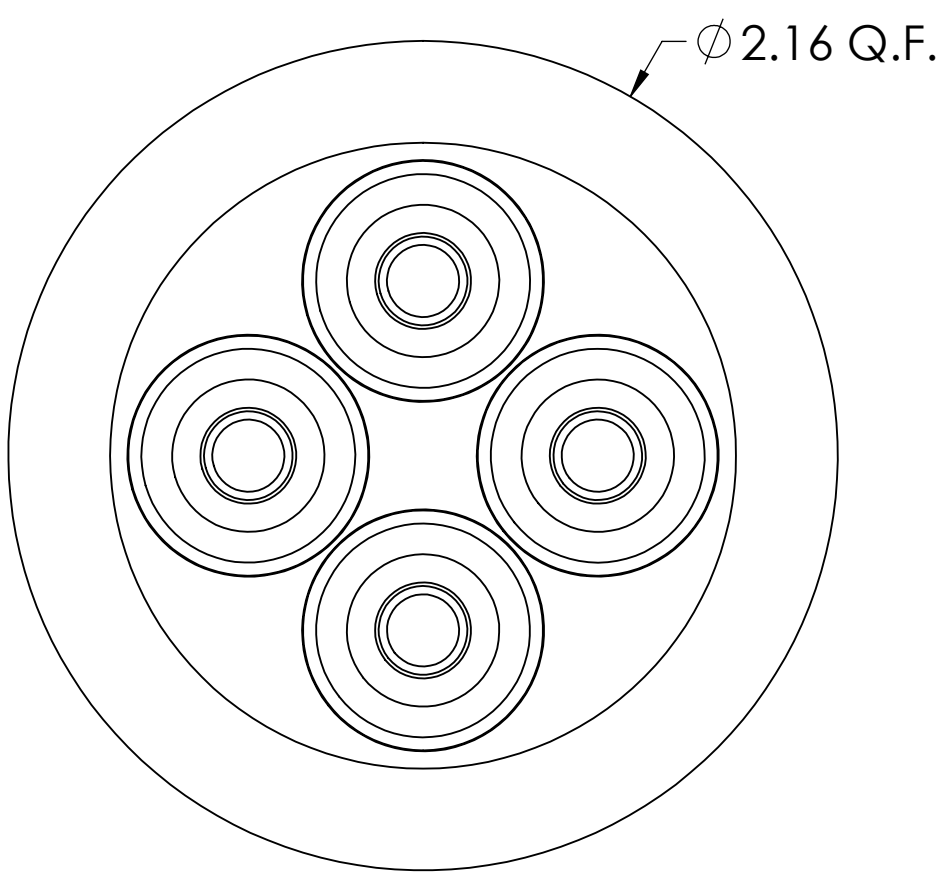
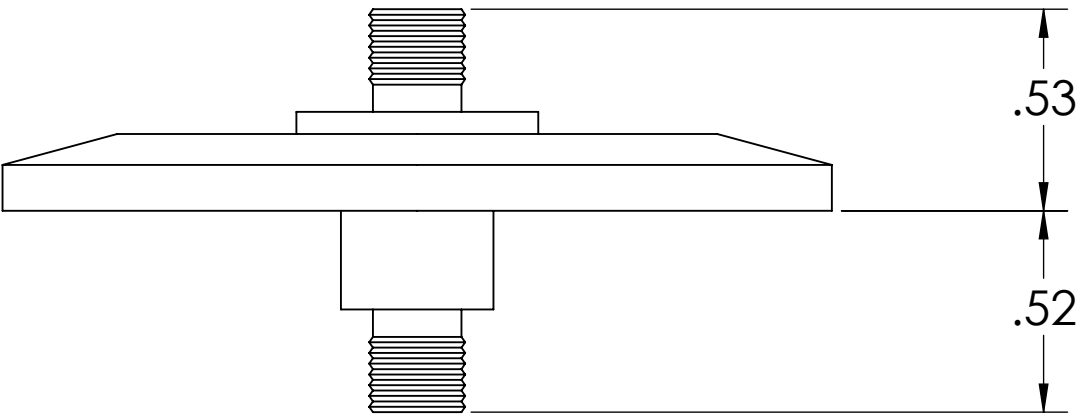


FIGURE III



PART #	# OF FEEDTHROUGH	FIGURE
A14340-1-QF	1	I
A14340-2-QF	2	II
A14340-3-QF	4	III

- NOTES:
1. IMPEDANCE: 50 OHM
 2. FREQUENCY RANGE: 0-18GHz
 3. VSWR: 1.1+0.01 X f (GHz)
 4. MAX VOLTAGE: 1000V
 5. TEMPERATURE: -65° TO 200°C
 6. LEAK RATE: <5 X 10⁻¹⁰ mbar l/s (He)
 7. MATERIALS: SS, BeCu, FeNi, Glass and PTFE
 8. PLATING: ALL METAL PARTS GOLD PLATED

High Frequency SMA Coaxial Double Ended Feedthrough, 1,2 or 4 Pin, Matched Impedance @ 50 OHM, 2.16" Quick Flange

UNLESS OTHERWISE SPECIFIED:

DIMENSIONS ARE IN INCHES
TOLERANCES:

ANGULAR: MACH ± 1/2°
TWO PLACE DECIMAL ± .030
THREE PLACE DECIMAL ± .015

MATERIAL

SEE NOTES

FINISH
SEE NOTES

PLATING
SEE NOTES

QUOTATION #

NAME	DATE
WJ	11/5/2015
CHECKED	11/5/2015
ENG APPR.	WJ 11/5/2015

THIRD ANGLE:

APPLICATION
NEXT ASSY
USED ON

SURFACE FINISH:
63/ OR BETTER

UNLESS OTHERWISE SPECIFIED:
ALL DIAMETERS CONCENTRIC WITHIN .005.
REMOVE ALL BURRS AND SHARP EDGES

QUOTATION

MPF PRODUCTS INC.

TITLE:
COAXIAL, HIGH FREQUENCY
DOUBLE ENDED SMA,
MATCHED IMPEDANCE @ 50
OHM, QF40

DOWNLOADED FROM MPFPI.COM
DWG. NO. A14340
REV

Thursday, November 05, 2015 8:25:54 AM