

A10959

REV

11/18/2013



FIGURE I

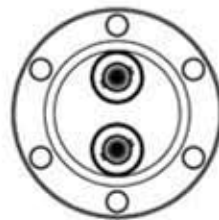


FIGURE II

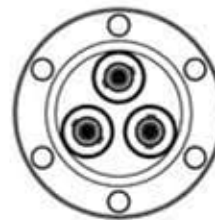


FIGURE III

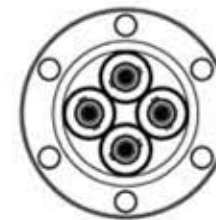
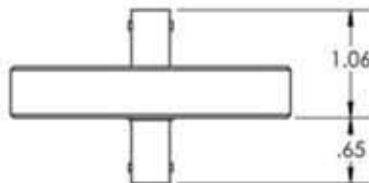


FIGURE IV



PART #	# OF FEEDTHRU	FIGURE
A10959-1-CF	1	I
A10959-2-CF	2	II
A10959-3-CF	3	III
A10959-4-CF	4	IV

NOTES:

1. UHV VACUUM RATING
2. TEMPERATURE RATING: -200°C - 300°C
3. CURRENT RATING: 5 AMPS MAX
4. VOLTAGE RATING: 6000 VOLTS DC
5. RESISTIVITY: >1G OHMS (PINS TO GROUND)
6. IMPEDANCE MATCHED @ 50 OHMS
7. FREQUENCY RANGE: DC TO 100 MHz
8. AIRSIDE CONNECTORS NOT INCLUDED

APPROVED

SHV Coaxial Double Ended Feedthrough, 1,2,3 and 4 Pin, Matched Impedance @ 50 OHM, 2.75" Conflat Flange

TITLE:
COAXIAL, DOUBLE ENDED SHV,
MATCHED IMPEDANCE @ 50 OHM,
275CF

PROPRIETARY AND CONFIDENTIAL		UNLESS OTHERWISE SPECIFIED:		MPF PRODUCTS INC.			MATCHED IMPEDANCE @ 50 OHM 275CF			
ANY REPRODUCTION IN PART OR AS A WHOLE WITHOUT THE WRITTEN PERMISSION OF MPF PRODUCTS INC. IS PROHIBITED.	DIMENSIONS ARE IN INCHES TOLERANCES: ANGULAR: MACH: 1/2" TWO PLACE DECIMAL THREE PLACE DECIMAL		FINISH	DRAWN BY	JB	DATE	07/26/2012	SIZE	DWG. NO.	REV
			CONFLAT				A	A10959		
			CHECKED	PH	07/26/2012					
USED ON:			DO NOT SCALE DRAWING	ENG APPR.	JB	DATE	07/26/2012	LAST SAVED DATE	Wednesday, November 13, 2013 4:37:14 PM	