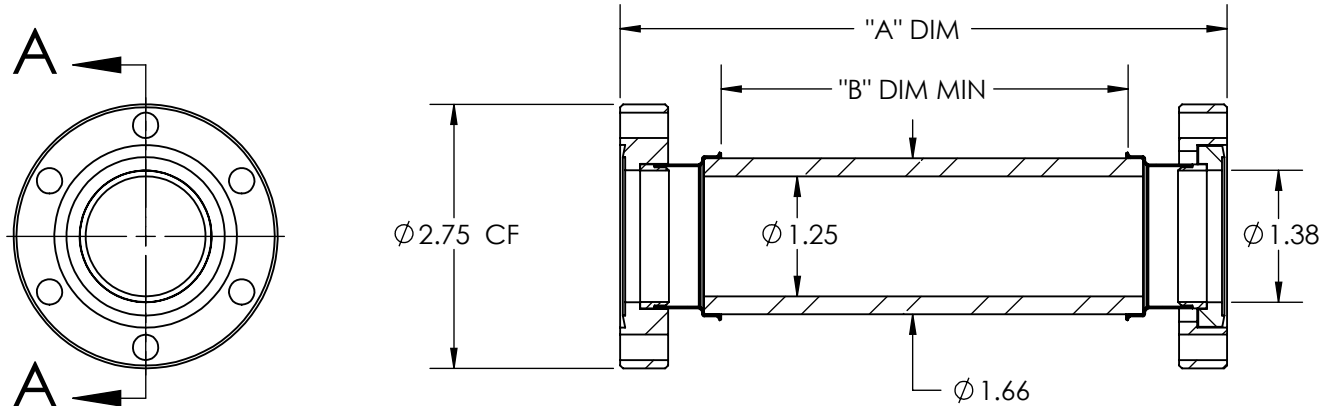
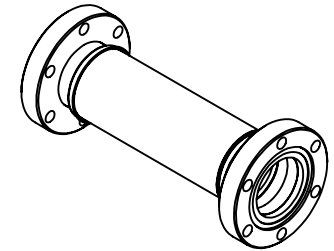


A0595

REV
11/6/2013

PART #	"A" DIM $\pm .060$	"B" DIM MIN	KV RATING
A0595-1-CF	2.65	.250	5
A0595-2-CF	4.20	2.00	30
A0595-3-CF	6.30	4.00	60

APPROVED

Ceramic Break, 5, 30 and 60KV, 2.75 Conflat Flange

TITLE:

BREAK, 5, 30 AND 60KV
1.5 TUBE, 275CF

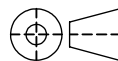
PROPRIETARY AND CONFIDENTIAL

UNLESS OTHERWISE SPECIFIED:

MPF PRODUCTS INC.

ANY REPRODUCTION IN PART OR AS A WHOLE WITHOUT THE
WRITTEN PERMISSION OF MPF PRODUCTS INC. IS PROHIBITED.

USED ON:

DIMENSIONS ARE IN INCHES
TOLERANCES:ANGULAR: MACH $\pm 1/2^\circ$
TWO PLACE DECIMAL
THREE PLACE DECIMAL $\pm .030$
 $\pm .015$ FINISH
CONFLAT

DO NOT SCALE DRAWING

DRAWN BY

JB

DATE
11/05/2013

CHECKED

JB

11/05/2013

ENG APPR.

JB

11/05/2013

SIZE

A

DWG. NO.

A0595

REV

11/6/2013

LAST SAVED DATE

Wednesday, November 06, 2013 7:54:45 AM