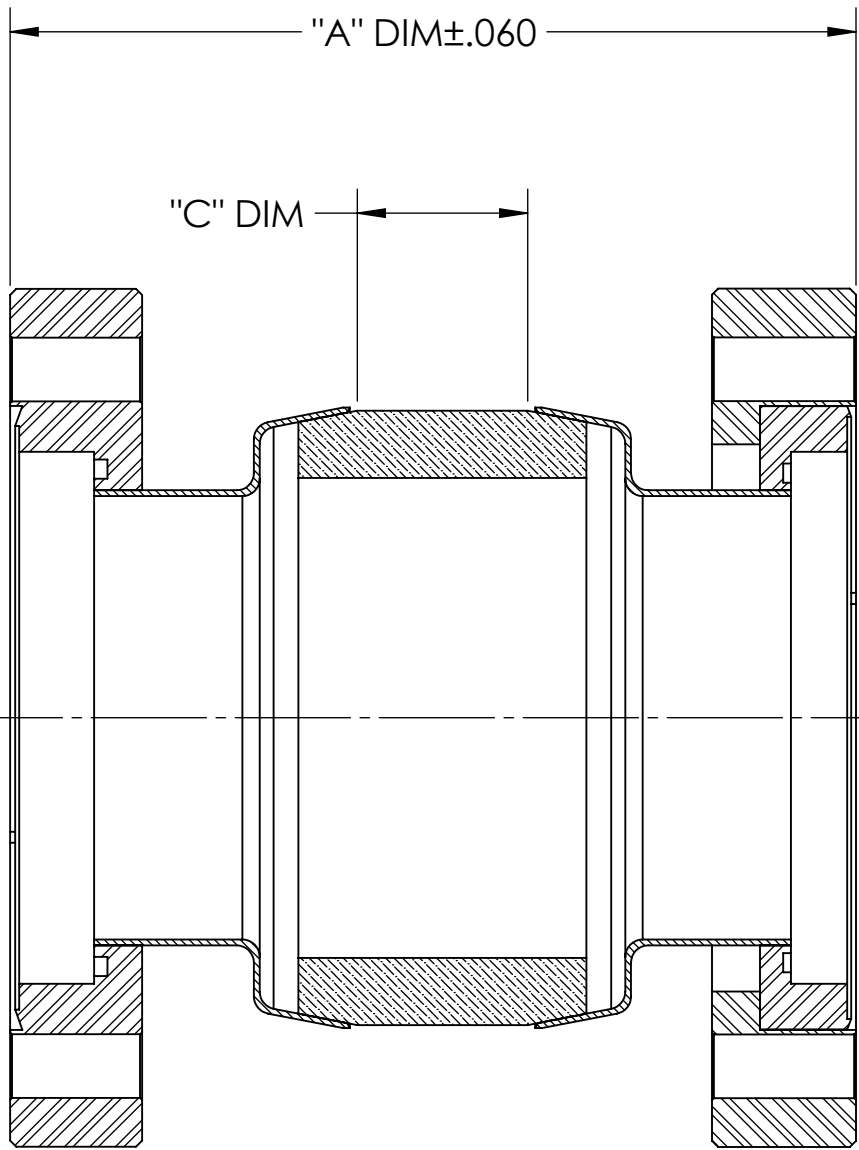
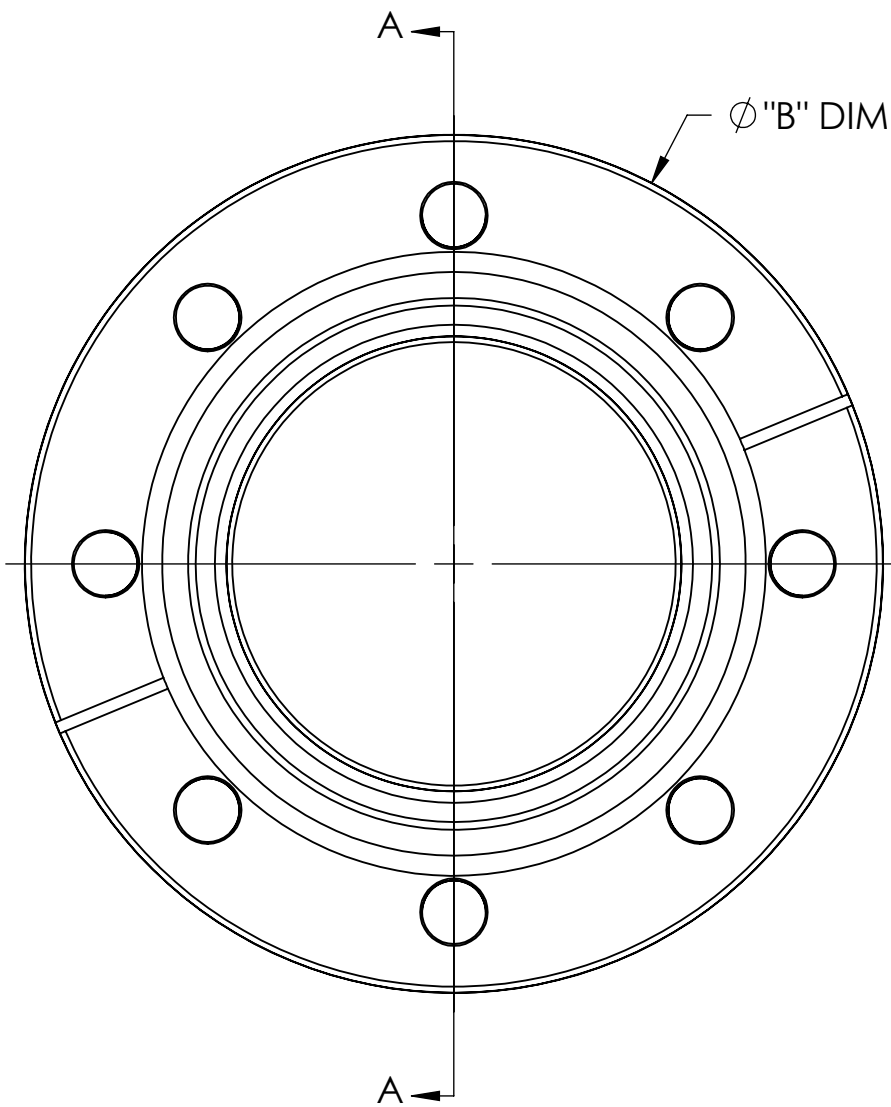


MPF PRODUCTS INC.



SECTION A-A

PART #	"A" DIM	"B" DIM	"C" DIM (MIN)	KV RATING
A0805-1-CF	4.50	4.50	.75	10
A0805-2-CF	4.62	6.00	.75	10
A0805-3-CF	5.50	8.00	1.50	20
A0805-4-CF	5.55	10.00	1.50	20

Ceramic Break, 10 and 20KV Isolation, 4.50", 6.00", 8.00" and 10.00" Conflat Flange.

UNLESS OTHERWISE SPECIFIED:		QUOTATION #		N/A		APPROVED	
DIMENSIONS ARE IN INCHES TOLERANCES:  ANGULAR: MACH ± 1/2° TWO PLACE DECIMAL ± .030 THREE PLACE DECIMAL ± .015  MATERIAL		DRAWN	WJ	DATE	9/11/2015	MPF PRODUCTS INC. TITLE:  BREAK, 10 AND 20KV 450CF/600CF/800CF/1000CF  DOWNLOADED FROM MPFPI.COM DWG. NO. A0805 REV	
		CHECKED	WJ	9/11/2015			
		ENG APPR.	WJ	9/11/2015			
		THIRD ANGLE:					
FINISH		SURFACE FINISH:		63/ OR BETTER			
PLATING		UNLESS OTHERWISE SPECIFIED:		ALL DIAMETERS CONCENTRIC WITHIN .005. REMOVE ALL BURRS AND SHARP EDGES			