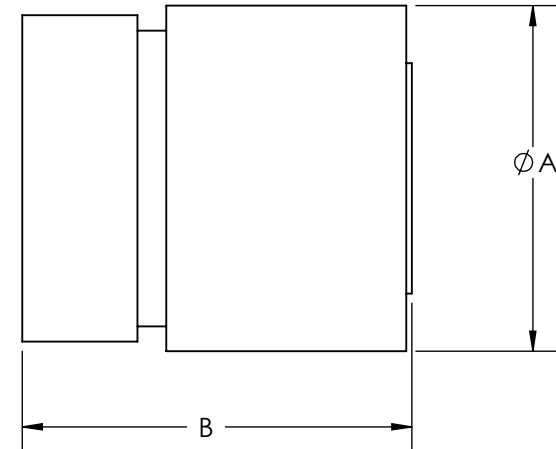
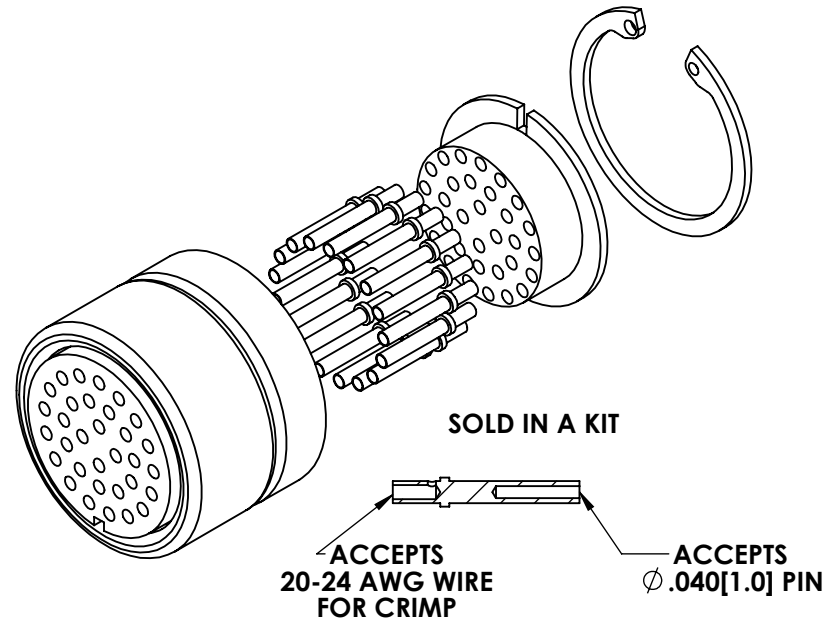


A8276

REV B

4/4/2014



PART #	# OF CONTACTS	A	B
A8276-1-CN	3	0.8	1.0
A8276-2-CN	6	0.9	1.0
A8276-3-CN	10	1.0	1.0
A8276-4-CN	19	1.1	1.0
A8276-5-CN	32	1.4	1.0
A8276-6-CN	41	1.5	1.0

**VACUUM SIDE PEEK CONNECTOR  
( CRIMP CONTACTS )  
1 KV 5 AMP  
OPERATING TEMPERATURE: -269 ° TO 250 °C**

APPROVED

PROPRIETARY AND CONFIDENTIAL

UNLESS OTHERWISE SPECIFIED:

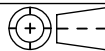
MPF PRODUCTS INC.

ANY REPRODUCTION IN PART OR AS A WHOLE  
WITHOUT THE WRITTEN PERMISSION OF  
MPF PRODUCTS INC. IS PROHIBITED.

USED ON

DIMENSIONS ARE IN INCHES  
TOLERANCES:

ANGULAR: MACH  $\pm 1/2^\circ$   
TWO PLACE DECIMAL  
THREE PLACE DECIMAL



$\pm .010$   
 $\pm .005$

MATERIAL

PEEK

$\sqrt{63}$  FINISH  
OR BETTER

PLATING

DRAWN BY

WJ

DATE

11/25/2009

CHECKED

JB

11/25/2009

ENG APPR.

WJ

11/25/2009

TITLE: CIRCULAR SERIES  
DOUBLE ENDED FEEDTHRU  
VACUUM SIDE CONNECTOR

SIZE

A

DWG. NO.

A8276

REV

B

4/4/2014

LAST SAVED DATE

Friday, April 04, 2014 2:12:24 PM