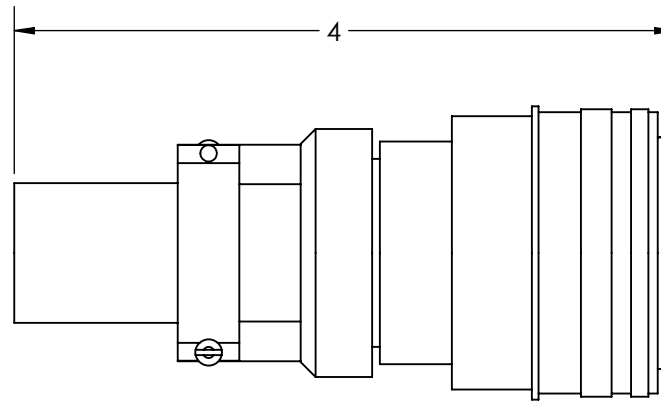
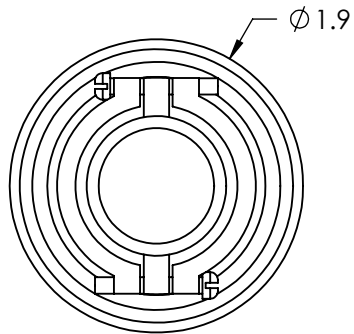
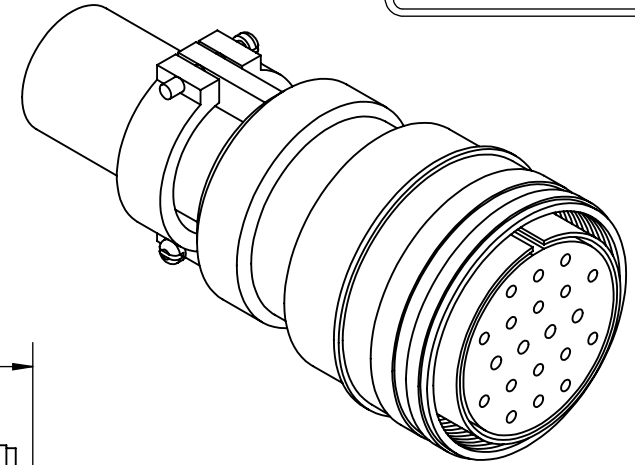


A0205

REV

11/10/2014



PART #	T/C TYPE
A0205-1-CN	K
A0205-2-CN	J
A0205-3-CN	E

TEMPERATURE RATING: UP TO 125°C

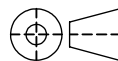
APPROVED

MS Series Air-side Connector, 10 Pair Thermocouple, Type E, J and K, Accepts 0.056" Pins

TITLE: MS CIRCULAR
THERMOCOUPLE CONNECTOR,
10 PAIR
TYPE E, J AND K

PROPRIETARY AND CONFIDENTIAL**UNLESS OTHERWISE SPECIFIED:****MPF PRODUCTS INC.**

ANY REPRODUCTION IN PART OR AS A WHOLE WITHOUT THE WRITTEN PERMISSION OF MPF PRODUCTS INC. IS PROHIBITED.

DIMENSIONS ARE IN INCHES
TOLERANCES:ANGULAR: MACH $\pm 1/2^\circ$
TWO PLACE DECIMAL
THREE PLACE DECIMAL $\pm .030$
 $\pm .015$ FINISH
CONNECTOR

DRAWN BY

JB

DATE
11/10/2014

CHECKED

WJ

11/10/2014

ENG APPR.

JB

11/10/2014

SIZE**A****DWG. NO.****A0205****REV**

11/10/2014

LAST SAVED DATE

Monday, November 10, 2014 10:34:46 AM

DO NOT SCALE DRAWING