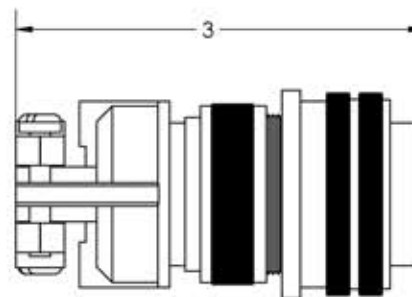
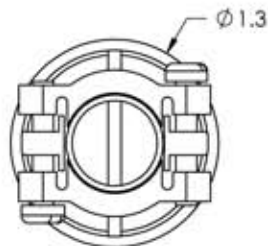
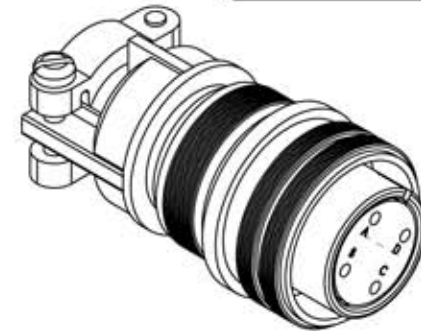


A1183-1-CN

REV

11/18/2013



TEMPERATURE RATING: UP TO 350 °C

APPROVED

MS Series Vacuum Side Connector, 2 Pair Thermocouple, Type J, Accepts 0.056" Pins

TITLE:

MS CIRCULAR  
THERMOCOUPLE CONNECTOR,  
2 PAIR, TYPE J

PROPRIETARY AND CONFIDENTIAL

UNLESS OTHERWISE SPECIFIED:

MPF PRODUCTS INC.

ANY REPRODUCTION IN PART OR AS A WHOLE WITHOUT THE  
WRITTEN PERMISSION OF MPF PRODUCTS INC. IS PROHIBITED.DIMENSIONS ARE IN INCHES  
TOLERANCES:

USED ON:

ANGULAR: MACH ± 1/2 °  
TWO PLACE DECIMAL  
THREE PLACE DECIMAL± .030  
± .015FINISH  
CONNECTOR

DRAWN BY

JB

DATE

CHECKED

ENG APPR.

JB

DO NOT SCALE DRAWING

SIZE

A

DWG. NO.

A1183-1-CN

REV

11/18/2013

LAST SAVED DATE

Monday, November 18, 2013 11:22:43 AM