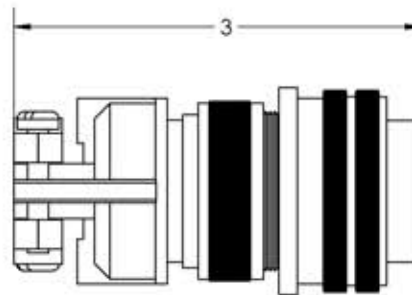
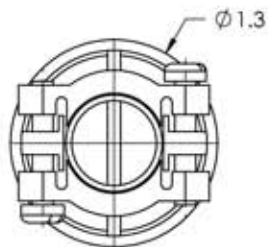
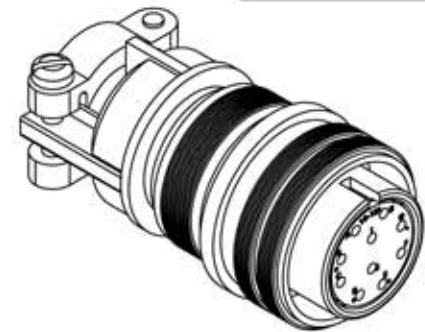


A1190-1-CN


REV
11/18/2013

TEMPERATURE RATING: UP TO 350°C

MS Series Vacuum Side Connector, 5 Pair Thermocouple, Type E, Accepts 0.056" Pins

APPROVED

TITLE: MS CIRCULAR
THERMOCOUPLE CONNECTOR,
5 PAIR, TYPE E

PROPRIETARY AND CONFIDENTIAL		UNLESS OTHERWISE SPECIFIED:		MPF PRODUCTS INC.				THERMAL SHOCK TEST VECTOR, 5 PAIR, TYPE E									
ANY REPRODUCTION IN PART OR AS A WHOLE WITHOUT THE WRITTEN PERMISSION OF MPF PRODUCTS INC. IS PROHIBITED.		DIMENSIONS ARE IN INCHES TOLERANCES:			FINISH CONNECTOR		DRAWN BY		JB		DATE		SIZE	DWG. NO. A1190-1-CN		REV	
USED ON:		ANGULAR: MACH: 1/2° TWO PLACE DECIMAL THREE PLACE DECIMAL			DO NOT SCALE DRAWING		ENG APPR.		JB				LAST SAVED DATE	Monday, November 18, 2013 11:20:42 AM		11/18/2013	