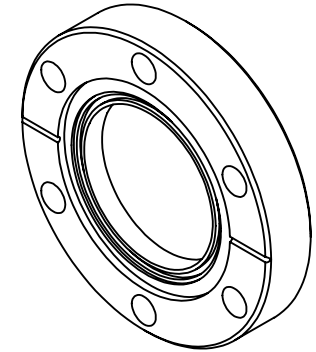
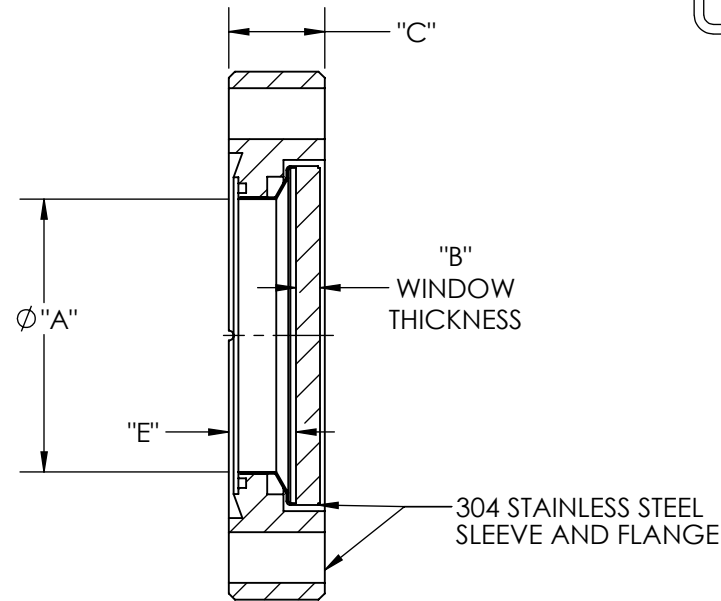
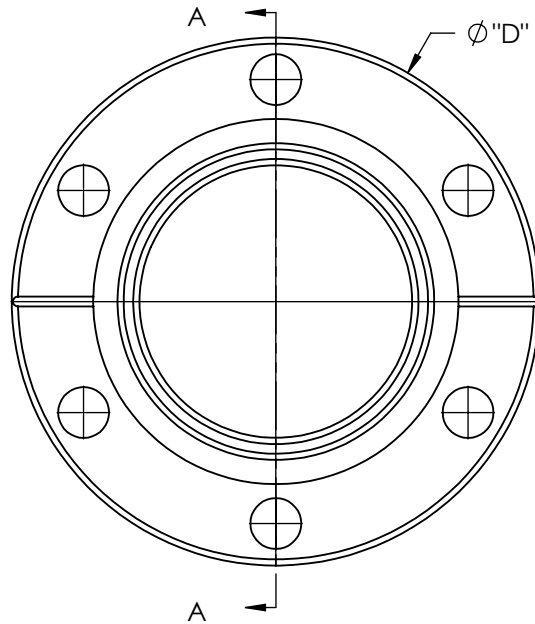


A0652

REV

8/18/2016



PART#	Ø "A" VIEW	"B"	"C"	"D"	"E"
A0652-1-CF	1.40	.13	.50	2.75	.35
A0652-2-CF	1.40	.13	.63	3.38	.35
A0652-3-CF	2.69	.25	.68	4.47	.42
A0652-4-CF	2.69	.25	.75	4.62	.42
A0652-5-CF	3.88	.25	.78	6.00	.51
A0652-6-CF	3.88	.25	.84	6.75	.51

NOTES:

1. LEAK RATE: $<2 \times 10^{-10}$ ATM-CC/SEC HE
2. PARALLELISM: <10 ARC SECONDS
3. FLATNESS: $\lambda/4$ @ 632NM TRANSMITTED WAVEFRONT
4. SURFACE FINISH: 20/10 SCRATCH-DIG
5. THERMAL RANGE: -100°C TO 200°C
6. MATERIAL: CORNING HPFS 7980 EXCIMER GRADE 193 FUSED SILICA
7. TRANSMISSION: $>99.5\%$ @ 193NM (INTERNAL)
8. HOMOGENEITY GRADE: A
9. INCLUSION CLASS: 0

APPROVED

EUV Grade Fused Silica Viewport, Zero Length Profile, 1.40" 2.69" View Dia, Conflat Flange

TITLE:

VIEWPORT, FUSED SILICA, EUV
CF FLANGE

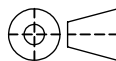
PROPRIETARY AND CONFIDENTIAL

UNLESS OTHERWISE SPECIFIED:

MPF PRODUCTS INC.

ANY REPRODUCTION IN PART OR AS A WHOLE WITHOUT THE
WRITTEN PERMISSION OF MPF PRODUCTS INC. IS PROHIBITED.

USED ON:

DIMENSIONS ARE IN INCHES
TOLERANCES:ANGULAR: MACH $\pm 1/2^{\circ}$
TWO PLACE DECIMAL
THREE PLACE DECIMAL $\pm .030$
 $\pm .015$ FINISH
CONFLAT

DO NOT SCALE DRAWING

DRAWN BY

WJ

DATE
04/24/2014

CHECKED

WJ

04/24/2014

ENG APPR.

WJ

04/24/2014

SIZE

A

DWG. NO.

A0652

REV

8/18/2016

LAST SAVED DATE

Thursday, August 18, 2016 8:22:24 AM