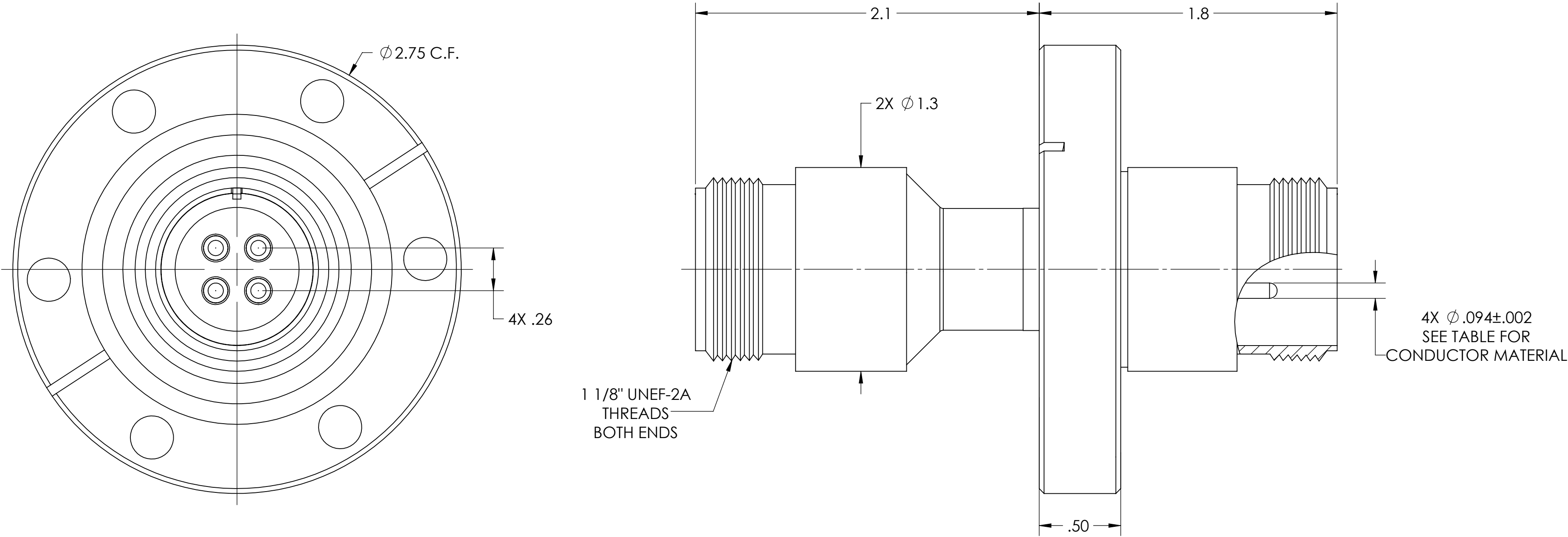
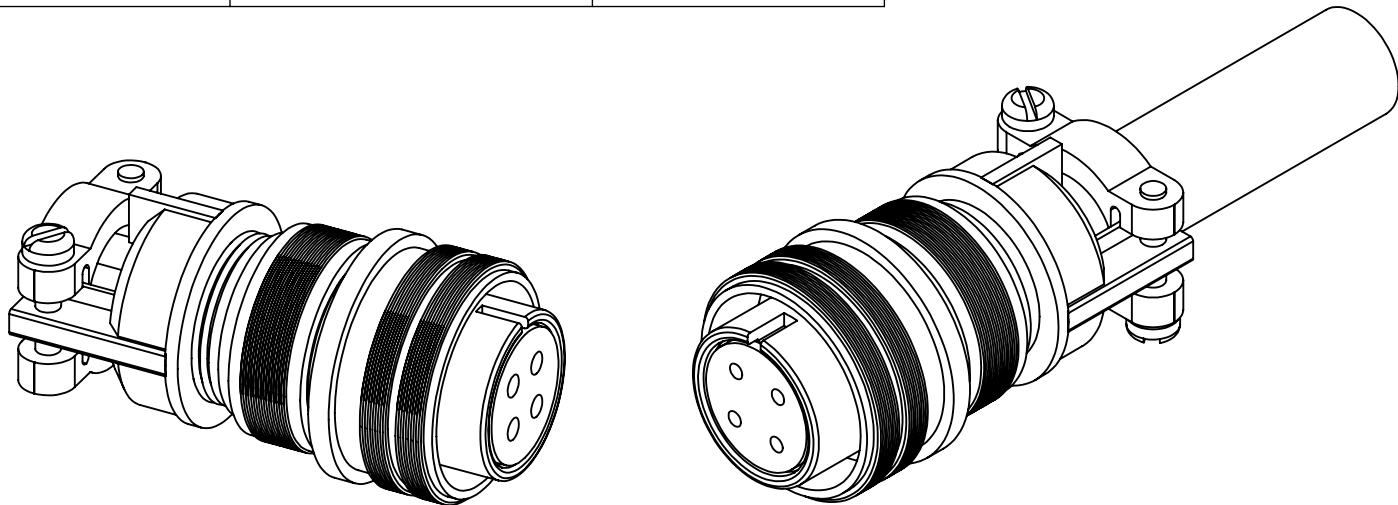


MPF PRODUCTS INC.



PART #	CONNECTORS	AIRSIDE CONN.	CONN. QUANTITY	VACUUM SIDE CONN.	CONN. QUANTITY	COND. MATERIAL	AMP RATING
A14856-1-CF	YES	A5104-1-CN	1	A15649-1-CN	1	MOLYBDENUM	28 AMPS
A14856-2-CF	NO	N/A	N/A	N/A	N/A	MOLYBDENUM	28 AMPS
A14856-3-CF	YES	A5104-1-CN	1	A15649-1-CN	1	NICKEL	16 AMPS
A14856-4-CF	NO	N/A	N/A	N/A	N/A	NICKEL	16 AMPS



MS High Current Series, Double Ended, Multipin Feedthrough, 4 Pins, 700 Volts, 0.94" Conductors, 2.75" Conflat Flange

UNLESS OTHERWISE SPECIFIED: DIMENSIONS ARE IN INCHES TOLERANCES: ANGULAR: MACH ± 1/2° TWO PLACE DECIMAL ± .030 THREE PLACE DECIMAL ± .015 MATERIAL Material <not specified> FINISH PLATING	QUOTATION #			N/A		APPROVED	
	DRAWN			WJ	9/11/2015	MPF PRODUCTS INC.	
	CHECKED			WJ	9/11/2015	TITLE:	
	ENG APPR.			WJ	9/11/2015	4 PIN, 700 VOLTS, DOUBLE ENDED, 275CF	
	THIRD ANGLE:			[Third Angle Projection Symbol]		DOWNLOADED FROM MPFPI.COM	
	APPLICATION			NEXT ASSY		USED ON	
	SURFACE FINISH:			63/ OR BETTER		DWG. NO.	
	UNLESS OTHERWISE SPECIFIED:			ALL DIAMETERS CONCENTRIC WITHIN .005. REMOVE ALL BURRS AND SHARP EDGES		REV	