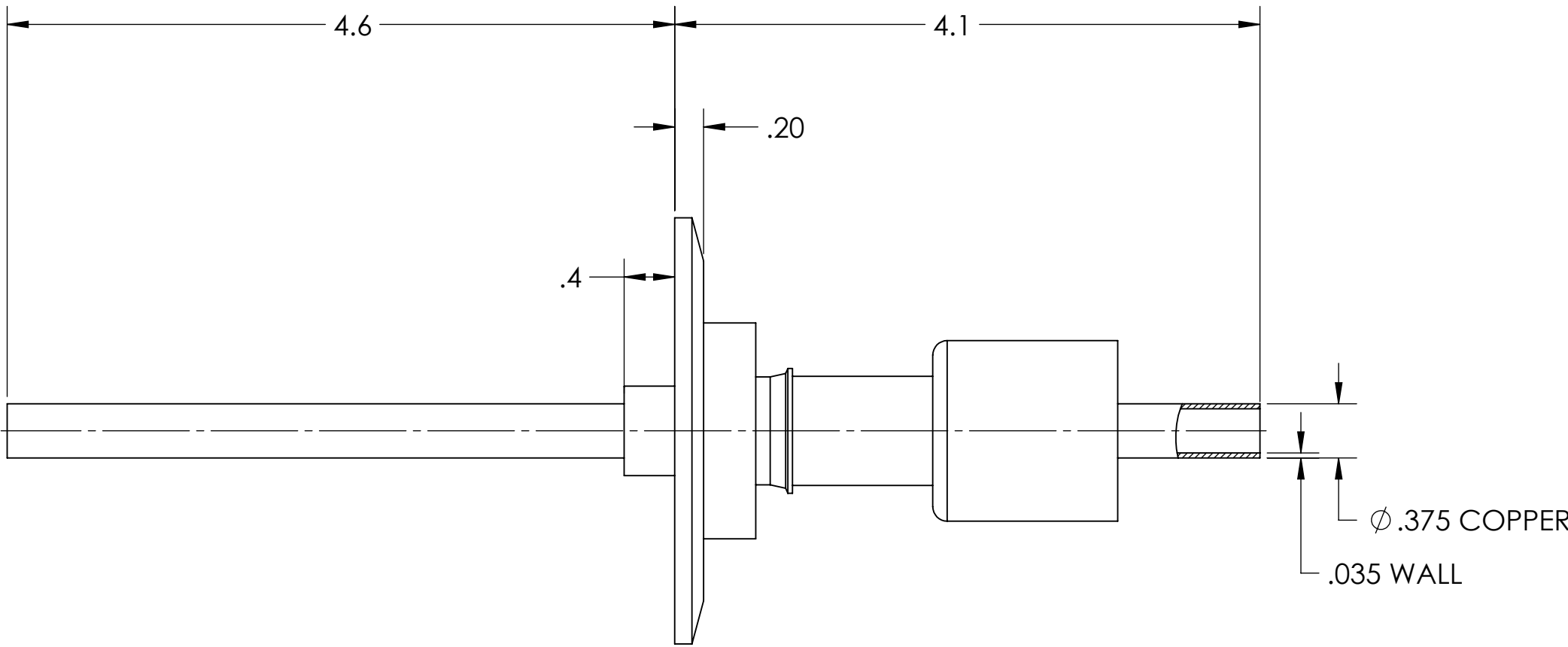
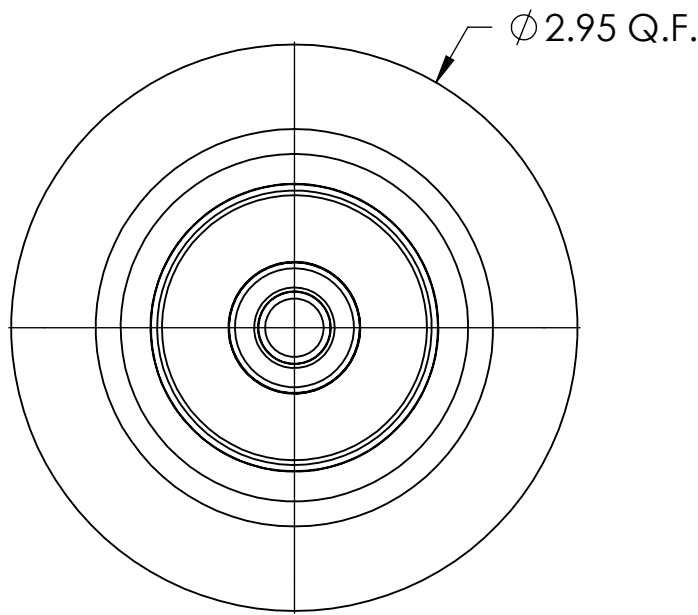


MPF PRODUCTS INC.



RF Power Feedthrough, 35KW, 10KV @ 13.56 MHz, Water Cooled, 2.95" Quick Flange.

UNLESS OTHERWISE SPECIFIED:		QUOTATION #		N/A	APPROVED	
DIMENSIONS ARE IN INCHES TOLERANCES: ANGULAR: MACH ± 1/2° TWO PLACE DECIMAL ± .030 THREE PLACE DECIMAL ± .015 MATERIAL			NAME	DATE		
		DRAWN	WJ	9/11/2015		
		CHECKED	WJ	9/11/2015		
		ENG APPR.	WJ	9/11/2015		
		THIRD ANGLE:				
		APPLICATION				
		NEXT ASSY		USED ON		
FINISH		SURFACE FINISH: OR BETTER				
PLATING		UNLESS OTHERWISE SPECIFIED: ALL DIAMETERS CONCENTRIC WITHIN .005. REMOVE ALL BURRS AND SHARP EDGES				
		DWG. NO. A1732-1-QF				
		REV				
		DOWNLOADED FROM MPFPI.COM				
		Thursday, February 2, 2017 7:21:02 AM				