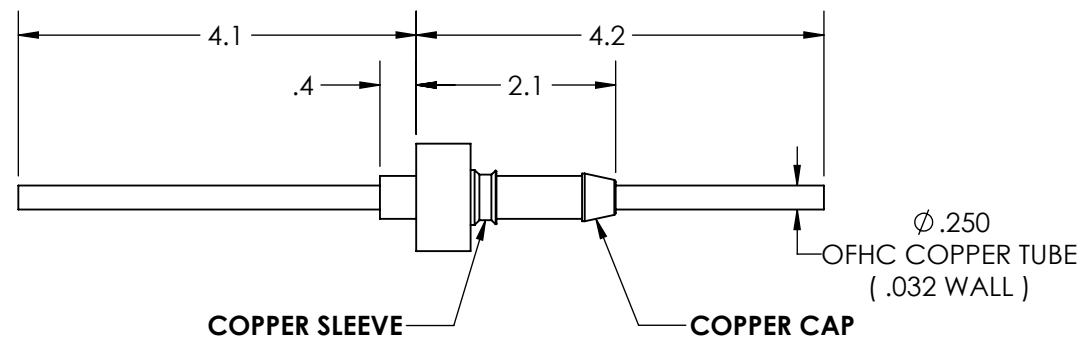


A0561-1-W

REV
9/11/2013

APPROVED

RF Power Feedthrough, 8000 Volts, 10 KW @ 450 KHz, 1 Tube, 0.25" Copper Conductor
1.12" Dia Stainless Steel Weld Adapter

TITLE:

RF POWER, 8KV, 10KW, 1PIN, WELD

PROPRIETARY AND CONFIDENTIAL

UNLESS OTHERWISE SPECIFIED:

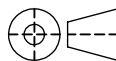
MPF PRODUCTS INC.

ANY REPRODUCTION IN PART OR AS A WHOLE WITHOUT THE
WRITTEN PERMISSION OF MPF PRODUCTS INC. IS PROHIBITED.

USED ON:

DIMENSIONS ARE IN INCHES
TOLERANCES:

ANGULAR: MACH $\pm 1/2^\circ$
TWO PLACE DECIMAL
THREE PLACE DECIMAL



$\pm .030$
 $\pm .015$

FINISH
WELDABLE

DO NOT SCALE DRAWING

DRAWN BY

JB

DATE

CHECKED

ENG APPR.

JB

SIZE
A

DWG. NO.

A0561-1-W

REV

9/11/2013

LAST SAVED DATE

Wednesday, September 11, 2013 7:11:15 AM