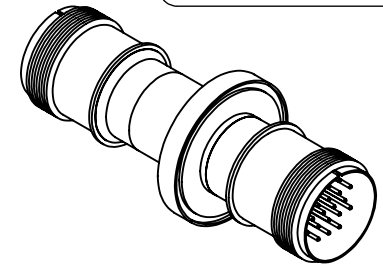
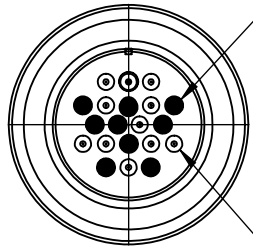


A1180-1-W

REV  
5/28/2013

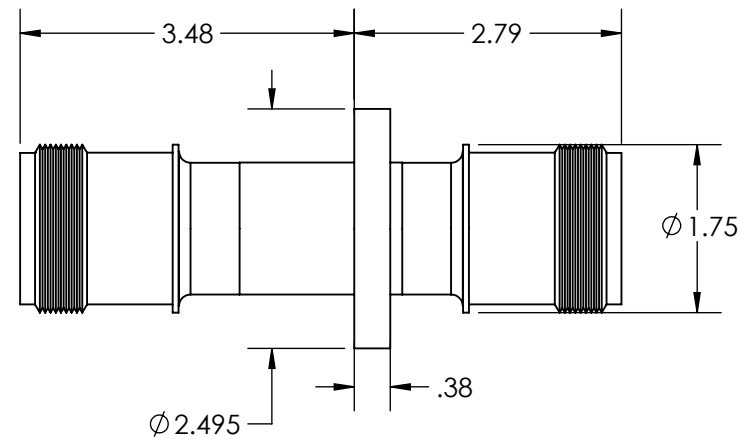
CHROMEL ( BLACK DOT )  
( + ) POSITIVE POLARITY  
NON-MAGNETIC



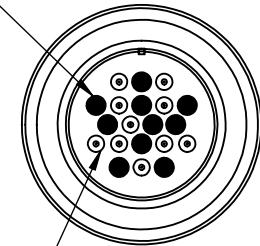
ALUMEL  
( - ) NEGATIVE POLARITY  
MAGNETIC

VACUUM SIDE

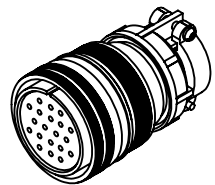
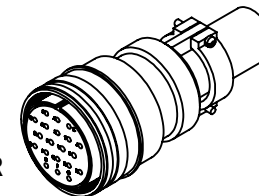
AIRSIDE



CHROMEL ( BLACK DOT )  
( + ) POSITIVE POLARITY  
NON-MAGNETIC



ALUMEL  
( - ) NEGATIVE POLARITY  
MAGNETIC

VACUUM SIDE  
CONNECTORAIRSIDE  
CONNECTOR

APPROVED

MS Series, Thermocouple Feedthrough, Type K, 10 Pairs, Double-Ended w/ Air & Vacuum-side Connectors  
2.50" Dia Stainless Steel Weld Adapter.

TITLE:

THERMOCOUPLE, TYPE K, 10 PAIR  
MS CONNECTOR, DOUBLE ENDED, WELD

PROPRIETARY AND CONFIDENTIAL

UNLESS OTHERWISE SPECIFIED:

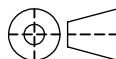
MPF PRODUCTS INC.

ANY REPRODUCTION IN PART OR AS A WHOLE WITHOUT THE  
WRITTEN PERMISSION OF MPF PRODUCTS INC. IS PROHIBITED.

USED ON:

DIMENSIONS ARE IN INCHES  
TOLERANCES:

ANGULAR: MACH  $\pm 1/2^\circ$   
TWO PLACE DECIMAL  
THREE PLACE DECIMAL



$\pm .030$   
 $\pm .015$

FINISH  
WELDABLE

DO NOT SCALE DRAWING

DRAWN BY

JB

DATE

CHECKED

ENG APPR.

JB

SIZE  
A

DWG. NO.

A1180-1-W

REV

5/28/2013

LAST SAVED DATE

Thursday, May 16, 2013 9:28:47 AM